



[Go to Product page](#)

Datasheet for ABIN119852
anti-KIR2D antibody (PE)

1 Image

Overview

Quantity:	100 tests
Target:	KIR2D
Reactivity:	Human
Host:	Mouse
Clonality:	Monoclonal
Conjugate:	This KIR2D antibody is conjugated to PE
Application:	Flow Cytometry (FACS)

Product Details

Clone:	NKVFS1
Isotype:	IgG1
Specificity:	This antibody recognizes KIR2D members of the killer cell immunoglobulin (Ig)-like receptor (KIR) family, CD158a, CD158b and P50.3. Clone NKVFS1 specifically recognizes the long and short forms CD158a and CD158b (KIR2DL, KIR2DS1 and KIR2DS2 respectively) and also p50.3 (KIR2DS4). The clone is reported to have functional activity, activating NK cell cytotoxicity via KIR2DS and inhibiting via KIR2DL forms. We recommend the use of SM2036A for this purpose.
Purification:	Affinity Chromatography on Protein G

Target Details

Target:	KIR2D
Alternative Name:	CD158 / KIR2D (KIR2D Products)

Target Details

Background: KIR2D family members are cell surface glycoproteins with two Ig domains, which are expressed on natural killer cells and some T cells. Synonyms: CD158a, CD158b, CD158i, KI2DL1, KILLER CELL Immunoglobulin-Like Receptors, KIR2DL3, KIR2DS4

Application Details

Application Notes: Flow Cytometry.
Other applications not tested.
Optimal dilutions are dependent on conditions and should be determined by the user.

Restrictions: For Research Use only

Handling

Reconstitution: SM2036R: Restore with 1 mL distilled water. SM2036RT: Restore with 0.25 mL distilled water.

Concentration: 0.1 mg/mL

Buffer: PBS, pH 7.4 containing 0.09 % Sodium Azide, 5 % Sucrose and 1 % BSA

Preservative: Sodium azide

Precaution of Use: This product contains sodium azide: a POISONOUS AND HAZARDOUS SUBSTANCE which should be handled by trained staff only.

Handling Advice: Avoid repeated freezing and thawing. Dilute only prior to immediate use.

Storage: -20 °C

Storage Comment: Aliquot contents and freeze at -20 °C or below.

Images

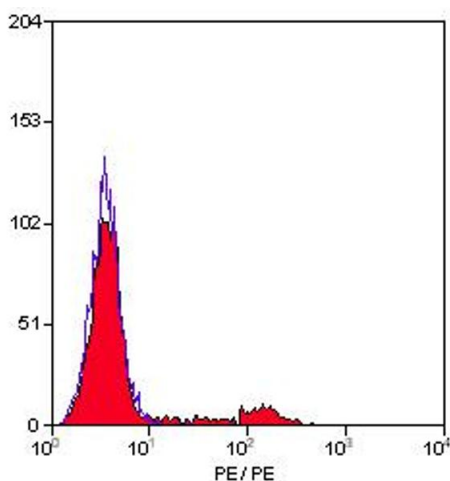


Image 1. Staining of human peripheral blood lymphocytes with MOUSE ANTI HUMAN KIR:RPE