

Datasheet for ABIN119977
anti-CD200R1 antibody (PE)



[Go to Product page](#)

1 Image

Overview

Quantity:	100 tests
Target:	CD200R1
Reactivity:	Mouse
Host:	Rat
Clonality:	Monoclonal
Conjugate:	This CD200R1 antibody is conjugated to PE
Application:	Flow Cytometry (FACS)

Product Details

Immunogen:	Fusion protein mCD200RCD4d3+4.
Clone:	OX-110
Isotype:	IgG2a
Specificity:	This antibody recognises CD200R, a cell surface glycoprotein (also known as OX2R).
Purification:	Affinity Chromatography on Protein G.

Target Details

Target:	CD200R1
Alternative Name:	CD200R (CD200R1 Products)
Background:	In mouse CD200R is expressed primarily by peripheral blood monocytes and neutrophils, but also by other leucocytes including Tlymphocytes and mast cells. Studies suggest that CD200-

Target Details

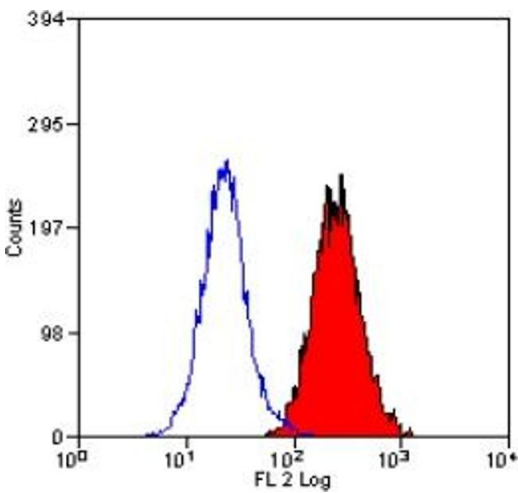
	CD200R interaction may be involved in the control of myeloid cellular function.Synonyms: CD200 Receptor 1, CD200 cell surface glycoprotein receptor, CD200R1, CRTR2, Cell surface glycoprotein CD200 receptor 1, Cell surface glycoprotein OX2 receptor 1, MOX2R, OX2R
Gene ID:	57781
NCBI Accession:	NP_067300
UniProt:	Q9ES57

Application Details

Application Notes:	Flow Cytometry: The Fc region of monoclonal antibodies may bind non-specifically to cells expressing low affinity fc receptors. Other applications not tested. Optimal dilutions are dependent on conditions and should be determined by the user.
Restrictions:	For Research Use only

Handling

Reconstitution:	Restore with 1 mL distilled water
Concentration:	0.1 mg/mL
Buffer:	PBS, pH 7.4 containing 0.09 % Sodium Azide and 1 % Bovine Serum Albumin
Preservative:	Sodium azide
Precaution of Use:	This product contains sodium azide: a POISONOUS AND HAZARDOUS SUBSTANCE which should be handled by trained staff only.
Handling Advice:	This product is photosensitive and should be protected from light
Storage:	4 °C
Storage Comment:	Store the antibody undiluted at 2-8 °C. DO NOT FREEZE!



Flow Cytometry

Image 1. Staining of mouse peripheral blood granulocytes with RAT ANTI MOUSE CD200r: rpe (ABIN119977).