



[Go to Product page](#)

Datasheet for ABIN120718

anti-MHC Class I RT1.Aa alpha-Chain (RT1.AA) antibody

1 Image

Overview

Quantity:	1 mg
Target:	MHC Class I RT1.Aa alpha-Chain (RT1.AA)
Reactivity:	Rat
Host:	Mouse
Clonality:	Monoclonal
Conjugate:	Un-conjugated
Application:	Flow Cytometry (FACS), Immunohistochemistry (Frozen Sections) (IHC (fro)), Immunoprecipitation (IP)

Product Details

Immunogen:	Rat spleen membrane glycoproteins depleted of Ia-A antigens. Donor: BALB/c spleen. Fusion Partner: X63 Ag8.653
Clone:	OX-18
Isotype:	IgG1
Purification:	Protein G Chromotraphy

Target Details

Target:	MHC Class I RT1.Aa alpha-Chain (RT1.AA)
Alternative Name:	MHC Class I (RT1Aa) (RT1.AA Products)
Background:	MHC Class I molecules play a central role in the immune system by presenting peptides derived from the endoplasmic reticulum lumen. MHC class I antigens are heterodimers consisting of

Target Details

one alpha chain (44 kDa) with beta 2 microglobulin (11.5 kDa). The antigen is expressed by all somatic cells at varying levels. MHC Class I molecules are expressed on most nucleated cells where they present endogenously synthesized antigenic peptides to CD8+ T lymphocytes, which are usually cytotoxic T cells. Fibroblasts or neurons however only show a low level of antigen. Synonyms: RT1 class I histocompatibility antigen AA alpha chain

Application Details

Application Notes: Optimal working dilution should be determined by the investigator.

Restrictions: For Research Use only

Handling

Concentration: 1.0 mg/mL

Buffer: PBS

Preservative: Azide free

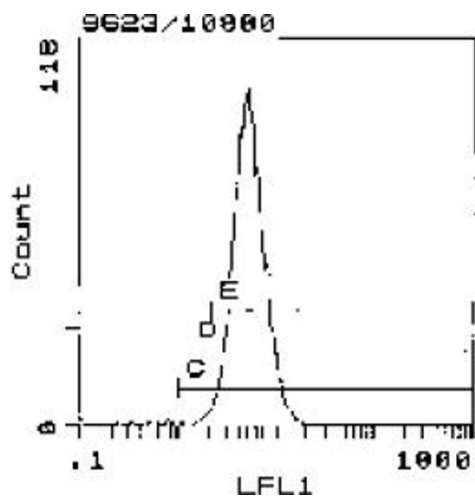
Storage: 4 °C/-20 °C

Storage Comment: Store the antibody undiluted at 2-8 °C for one month or (in aliquots) at -20 °C for longer. Avoid repeated freezing and thawing. Handle under aseptic conditions.

Shelf Life: one year from despatch.

Expiry Date: 12 months

Images



Flow Cytometry

Image 1. Cell Source: Spleen - Percentage of cells stained above control: 97.0%