

Datasheet for ABIN121164

anti-RASSF1 antibody (Isoform A, N-Term)**3** Images[Go to Product page](#)

Overview

Quantity:	0.1 mL
Target:	RASSF1
Binding Specificity:	AA 1-340, Isoform A, N-Term
Reactivity:	Human
Host:	Mouse
Clonality:	Monoclonal
Conjugate:	This RASSF1 antibody is un-conjugated
Application:	Western Blotting (WB), Immunofluorescence (IF), Enzyme Immunoassay (EIA)

Product Details

Immunogen:	Recombinant human RASSF1A (1-340 aa), purified from E. coli
Clone:	3F3
Isotype:	IgG1
Purification:	Protein-G affinity chromatography

Target Details

Target:	RASSF1
Alternative Name:	RASSF1 (RASSF1 Products)
Background:	The tumor suppressor gene RASSF1A (3p21.3), human Ras association domain family 1A, is expressed in heart, brain, placenta, lung, liver, skeletal muscle, kidney, pancreas, spleen, thymus,

Target Details

prostate, testis, small intestine, colon, and peripheral blood leukocytes. RASSF1A expression is inhibited by hypermethylation of the CpG island including the promoter and early transcribed regions of the human RASSF1A gene. Hypermethylated RASSF1A promoter is observed in primary tumors. Furthermore, RASSF1A is related with cell cycle regulation, apoptosis and microtubule stability. Synonyms: NORE2A, RASSF1A, RDA32, REH3P21, Ras association domain-containing protein 1

UniProt: [Q9NS23](#)

Application Details

Application Notes: The antibody has been tested by ELISA, immunocytochemistry analysis and Western blotting to assure specificity and reactivity. Recommended dilution range for Western blot analysis is 1:500 approx. 1:2,000 (1:1000 as starting dilution).
Other applications not tested.
Optimal dilutions are dependent on conditions and should be determined by the user.

Restrictions: For Research Use only

Handling

Format: Liquid

Concentration: 1.0 mg/mL

Buffer: PBS, pH 7.4, 0.09 % Sodium Azide

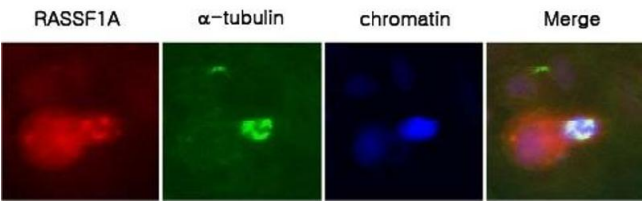
Preservative: Sodium azide

Precaution of Use: This product contains sodium azide: a POISONOUS AND HAZARDOUS SUBSTANCE which should be handled by trained staff only.

Storage: 4 °C/-20 °C

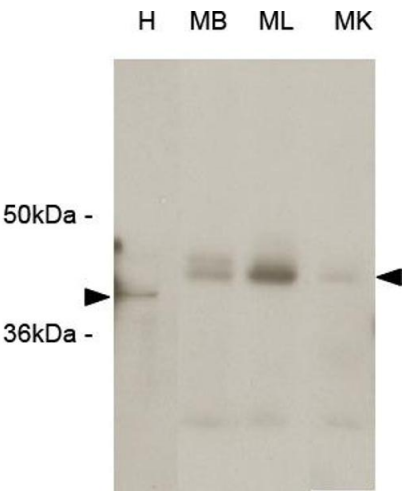
Storage Comment: Store undiluted at 2-8 °C for up to one month or (in aliquots) at -20 °C for longer. Avoid repeated freezing and thawing.
Shelf Life: one year from despatch.

Expiry Date: 12 months



Immunofluorescence

Image 1. Immunocytochemistry: A431 cells were labeled with anti-RASSF1a(clone 3F3) mAb, and detection was using a biotinylated secondary antibody and Texas-red conj. streptavidin.



Western Blotting

Image 2. Western blot analysis The extracts of HeLa (H) cells , mouse brain (MB), mouse liver (ML) and mouse kidney (MK) tissues (each 20 ug) were resolved by SDS-PAGE, transferred to PVDF membrane and probed with anti-human RASSF1A (1:1000). Proteins were visualized using a goat anti-mouse secondary antibody conjugated to HRP and a ECL detection system. Arrows indicate RASSF1A protein (about 40kDain HeLa cells, and 43kDa in other tissues).

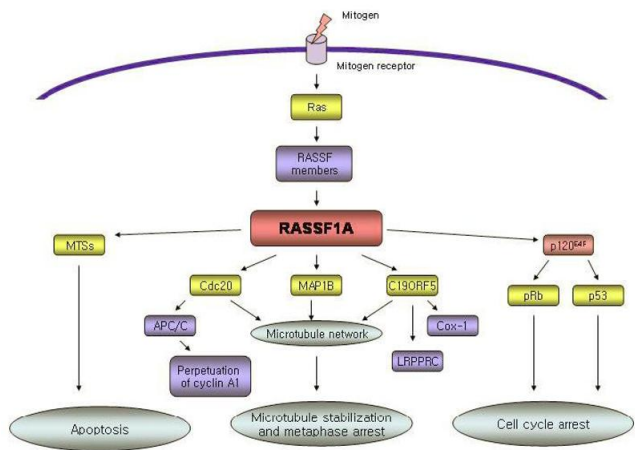


Image 3. Agathangelou A. et al