

Datasheet for ABIN121182
anti-KIR2DL1 antibody (AA 23-223)



[Go to Product page](#)

1 Image

Overview

Quantity:	0.1 mL
Target:	KIR2DL1
Binding Specificity:	AA 23-223
Reactivity:	Human
Host:	Mouse
Clonality:	Monoclonal
Conjugate:	This KIR2DL1 antibody is un-conjugated
Application:	Western Blotting (WB), Immunoprecipitation (IP), Enzyme Immunoassay (EIA)

Product Details

Immunogen:	Recombinant human KIR2DL1 (23-223 aa) purified from E. coli
Clone:	2F9
Isotype:	IgG2a
Specificity:	This antibody recognizes human KIR2DL1. Other species not tested. Cross reactivity: KIR2DL1: +++ KIR2DL3: + KIR2DS4: + KIR2DL4: -
Purification:	Protein-G affinity chromatography

Target Details

Target:	KIR2DL1
Alternative Name:	CD158a / KIR2DL1 (KIR2DL1 Products)

Target Details

Background: The KIR family consists of transmembrane glycoproteins of the Ig superfamily expressed on human NK cells and a subset of human T cells which they are involved in recognition of either MHC class I molecules or unknown ligand on target cells and inhibit cytotoxic activities. Synonyms: 1MHC class I NK cell receptor, CD158 antigen-like family member A, Killer cell immunoglobulin-like receptor 2DL, NKAT1, Natural killer-associated transcript 1, p58 natural killer cell receptor clones CL-42/47.11, p58.1 MHC class-I-specific NK receptor

UniProt: [P43626](#)

Application Details

Application Notes: ELISA. Immunoprecipitation. Western blot (1:500).
Other applications not tested.
Optimal dilutions are dependent on conditions and should be determined by the user.

Restrictions: For Research Use only

Handling

Format: Liquid

Concentration: 1.0 mg/mL

Buffer: PBS, pH 7.4, containing 0.09 % sodium azide

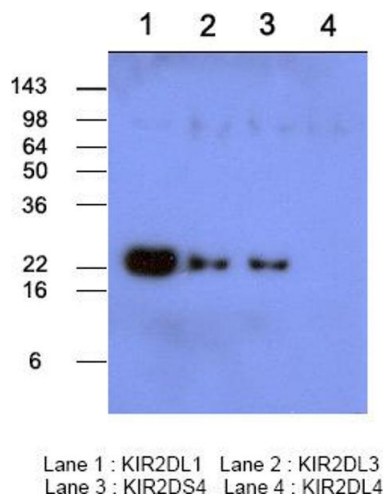
Preservative: Sodium azide

Precaution of Use: This product contains sodium azide: a POISONOUS AND HAZARDOUS SUBSTANCE which should be handled by trained staff only.

Storage: 4 °C/-20 °C

Storage Comment: Store the antibody at 2 - 8 °C up to one month or (in aliquots) at -20 °C for longer. Avoid repeated freezing and thawing.
Shelf Life: one year from despatch.

Expiry Date: 12 months



Western Blotting

Image 1. Western blot analysis Recombinant human protein KIR2DL1, KIR2DL3, KIR2DS4 and KIR2DL4 (each 50ng per well) were resolved by SDS-PAGE, transferred to PVDF membrane and probed with anti-human KIR2DL1 (1:500). Proteins were visualized using a goat anti-mouse secondary antibody conjugated to HRP and an ECL detection system.