

Datasheet for ABIN122638  
**anti-PSGR antibody (N-Term)**[Go to Product page](#)

## 1 Image

## Overview

Quantity:	50 µg
Target:	PSGR (OR51E2)
Binding Specificity:	N-Term
Reactivity:	Human, Rat, Mouse
Host:	Rabbit
Clonality:	Polyclonal
Conjugate:	This PSGR antibody is un-conjugated
Application:	Immunohistochemistry (Paraffin-embedded Sections) (IHC (p))

## Product Details

Immunogen:	Synthetic peptide - KLH conjugated.
Specificity:	Reacts with PSGR (Family: GPCR, subfamily: Olfactory).
Cross-Reactivity (Details):	Species reactivity (expected):Mouse and Rat. Species reactivity (tested):Human.
Purification:	Immunoaffinity Chromatography.

## Target Details

Target:	PSGR (OR51E2)
Alternative Name:	Olfactory Receptor 51E2 ( <a href="#">OR51E2 Products</a> )
Background:	Prostate-specific G protein-coupled receptor possesses homology to the Olfactory Receptor

## Target Details

family. It is expressed specifically in normal prostate, and its expression is upregulated in prostate carcinoma. In humans, it has also been shown to be expressed in the olfactory epithelium and, to a lesser extent, in the medulla of the brain. ESTs have been isolated from prostate libraries. Synonyms: HPRAJ, OR51E2, Olfactory receptor OR11-16, PSGR, Prostate-specific G-protein coupled receptor

Gene ID: 81285

UniProt: [Q9H255](#)

## Application Details

Application Notes: Immunohistochemistry with formalin fixed paraffin embedded tissues: 16 µg/mL Antigen Retrieval: Steam slides in 0.01 M sodium citrate buffer, pH 6.0, at 99-100 °C for 20 min. Remove from heat and let stand at room temperature in buffer for 20 min. Rinse in 1x TBS with Tween (TBST) for 1 min. at room temperature.  
Other applications not tested.  
Optimal dilutions are dependent on conditions and should be determined by the user. Further Comments: This product was originally produced by MBL International.

Restrictions: For Research Use only

## Handling

Concentration: 1.0 mg/mL

Buffer: PBS containing 0.09 % Sodium Azide as preservative.

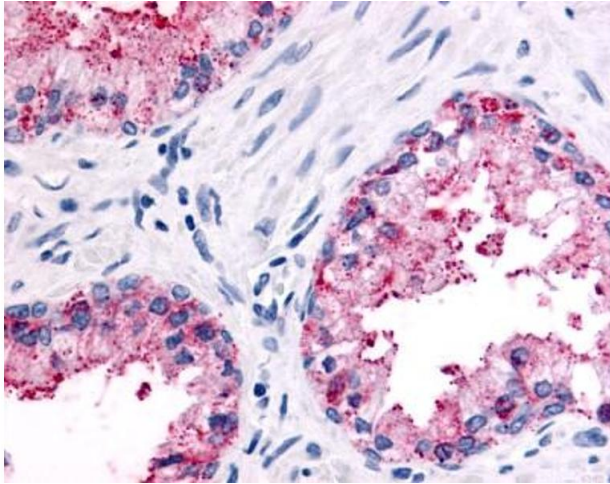
Preservative: Sodium azide

Precaution of Use: This product contains sodium azide: a POISONOUS AND HAZARDOUS SUBSTANCE which should be handled by trained staff only.

Storage: 4 °C/-20 °C

Storage Comment: Store the antibody undiluted at 2-8 °C for one month or (in aliquots) at -20 °C to -70 °C for longer. Avoid repeated freezing and thawing.  
Shelf life: one year from despatch.

Expiry Date: 12 months



#### Immunohistochemistry

**Image 1.** Immunohistochemical staining of Prostate (Epithelium) using anti- OR51E2 antibody ABIN122638