

Datasheet for ABIN127258

**anti-Selectin E/CD62e antibody**[Go to Product page](#)**2** Images

## Overview

Quantity:	0.1 mg
Target:	Selectin E/CD62e (SELE)
Reactivity:	Human, Mouse, Rat
Host:	Rabbit
Clonality:	Polyclonal
Conjugate:	This Selectin E/CD62e antibody is un-conjugated
Application:	Western Blotting (WB), Immunoprecipitation (IP), Immunohistochemistry (Paraffin-embedded Sections) (IHC (p))

## Product Details

Immunogen:	Synthetic peptide surrounding amino acid 584 of Human E-Selectin.
Isotype:	IgG
Purification:	Protein A Affinity Chromatography

## Target Details

Target:	Selectin E/CD62e (SELE)
Alternative Name:	CD62E / E-Selectin ( <a href="#">SELE Products</a> )
Background:	Selectin E is also known as endothelial leukocyte adhesion molecule 1 (ELAM1) or CD62E. It is a type I membrane protein that belongs to the selectin family of surface molecules (along with CD62L and CD62P). Selectins are C type cell surface lectins that play a role in leukocyte adhesion to the blood vessel wall endothelium. CD62E (E selectin) is an endothelial cell specific

## Target Details

selectin that is expressed on cytokine induced endothelial cells only after activation with proinflammatory cytokines. In vitro experiments have shown that IL1, TNFalpha and bacterial wall components like lipopolysaccharides induce the transcription of CD62E in an NFkB dependent signalling cascade. CD62E has been associated with blood vessel endothelium in diverse inflammatory situations. The main ligands recognised by CD62E are oligosaccharides related to sialyl lewis x. Synonyms: CD62 antigen-like family member E, ELAM1, Endothelial leukocyte adhesion molecule 1, LECAM2, Leukocyte-endothelial cell adhesion molecule 2, SELE

Gene ID:	9606
UniProt:	<a href="#">P16581</a>
Pathways:	<a href="#">Thromboxane A2 Receptor Signaling</a>

## Application Details

Application Notes:	Western Blot: 0.5-4 µg/mL. Immunoprecipitation: 10-20 µg/mL. Immunohistochemistry (Paraffin Sections): 10-20 µg/mL. Positive Controls: Jurkat cell lysate, Mouse small intestine and Rat kidney tissue lysate.  Other applications not tested.  Optimal dilutions are dependent on conditions and should be determined by the user.
Restrictions:	For Research Use only

## Handling

Concentration:	0.5 mg/mL
Buffer:	PBS containing 0.02 % Thimerosal as preservative
Preservative:	Thimerosal (Merthiolate)
Precaution of Use:	This product contains thimerosal (merthiolate): a POISONOUS AND HAZARDOUS SUBSTANCE which should be handled by trained staff only.
Handling Advice:	Avoid repeated freezing and thawing.
Storage:	-20 °C/-80 °C
Storage Comment:	Store the antibody undiluted at -20 °C or for long term storage (in aliquots) at -20 °C to -70 °C.

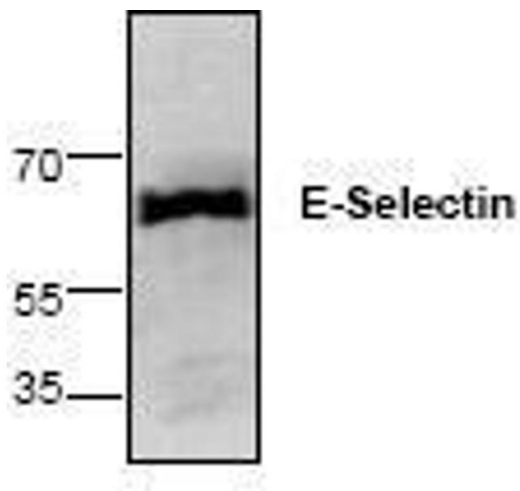


Image 1.

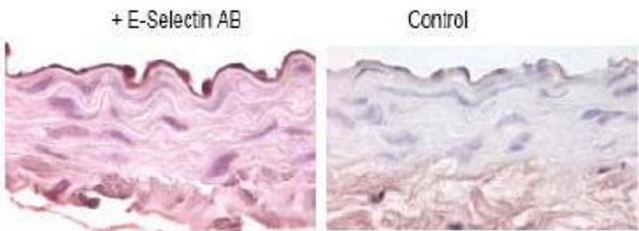


Image 2.