

Datasheet for ABIN127309

anti-BRCA2 antibody (N-Term)[Go to Product page](#)**1** Image

Overview

Quantity:	0.1 mg
Target:	BRCA2
Binding Specificity:	N-Term
Reactivity:	Human, Mouse
Host:	Rabbit
Clonality:	Polyclonal
Conjugate:	This BRCA2 antibody is un-conjugated
Application:	Western Blotting (WB)

Product Details

Immunogen:	Synthetic peptide mapping to the N-terminus of Human BRCA2.
Specificity:	This antibody detects BRCA2.
Purification:	Affinity Chromatography.

Target Details

Target:	BRCA2
Alternative Name:	BRCA2 / FANCD1 (BRCA2 Products)
Background:	BRCA 1 and 2 are breast cancer susceptibility proteins that plays a role in DNA damage, repair, cell cycle progression, transcription and apoptosis, etc. The BRCA1 gene is expressed in numerous tissues, including breast and ovary, and encodes a predicted protein of 1863 amino acids. BRCA2 has been shown to be required for localization of Rad51 to sites of DSBs (double

Target Details

	stranded breaks) in DNA. Cells lacking BRCA1 and BRCA2 cannot repair DSBs through the Rad51-dependent process.Synonyms: Breast cancer type 2 susceptibility protein, FACD, Fanconi anemia group D1 protein
Gene ID:	675
NCBI Accession:	NP_000050
UniProt:	P51587
Pathways:	DNA Damage Repair , M Phase , Maintenance of Protein Location

Application Details

Application Notes:	Western Blot: 0.5-4 µg/mL. HeLa cell lysate can be used as a Positive Control. Other applications not tested. Optimal dilutions are dependent on conditions and should be determined by the user.
Restrictions:	For Research Use only

Handling

Concentration:	0.5 mg/mL
Buffer:	PBS pH 7.2, containing 30 % Glycerol, 0.5 % BSA and 0.01 % Thimerosal
Preservative:	Thimerosal (Merthiolate)
Precaution of Use:	This product contains thimerosal (merthiolate): a POISONOUS AND HAZARDOUS SUBSTANCE which should be handled by trained staff only.
Handling Advice:	Avoid repeated freezing and thawing.
Storage:	-20 °C/-80 °C
Storage Comment:	Store the antibody undiluted at -20 °C or for long term storage (in aliquots) at -70 °C.

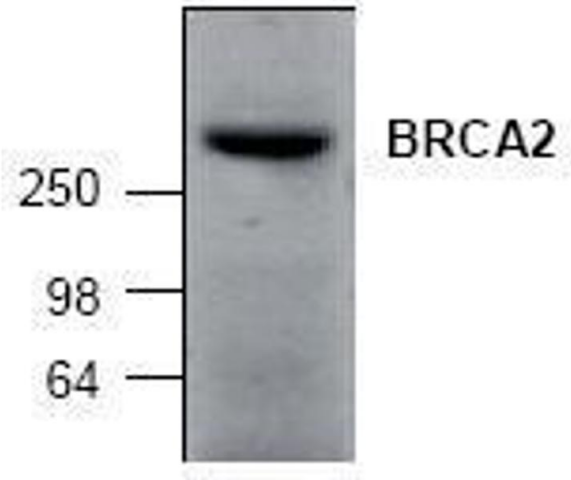


Image 1.