

Datasheet for ABIN129506  
**anti-Thyroglobulin antibody**[Go to Product page](#)

## 1 Image

## Overview

Quantity:	100 µg
Target:	Thyroglobulin (TG)
Reactivity:	Human
Host:	Mouse
Clonality:	Monoclonal
Conjugate:	This Thyroglobulin antibody is un-conjugated
Application:	Immunohistochemistry (IHC), ELISA, Western Blotting (WB), Immunoprecipitation (IP)

## Product Details

Immunogen:	This protein A purified monoclonal antibody was produced by repeated immunizations with human thyroglobulin protein. Immunogenotype:Native
Clone:	2H11
Isotype:	IgG
Cross-Reactivity:	Mouse (Murine), Rat (Rattus), Dog (Canine)
Characteristics:	Concentration Definition: by UV absorbance at 280 nm

## Target Details

Target:	Thyroglobulin (TG)
Alternative Name:	Thyroglobulin ( <a href="#">TG Products</a> )

## Target Details

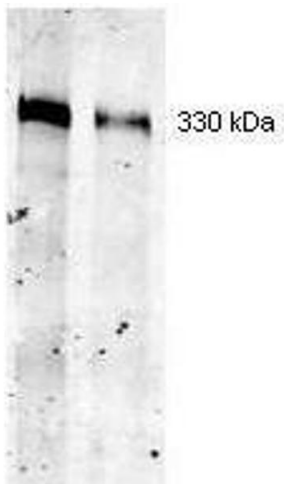
Background:	<p>Thyroglobulin (Tg) is synthesized by the follicular epithelial cells of the thyroid and secreted from the thyroid gland with the stimulation of TSH and/or thyroid stimulating immunoglobulins. Thyroglobulin is a prognostic marker for Graves` disease. Thyroglobulin antibody has been useful in the positive identification of thyroid carcinomas of the papillary and follicular types.</p> <p>Synonyms: AITD 3 antibody, AITD3 antibody, hTG antibody, TDH3 antibody, Tg antibody, TGN antibody</p>
Gene ID:	7038
UniProt:	<a href="#">P01266</a>
Pathways:	<a href="#">Thyroid Hormone Synthesis</a>

## Application Details

Application Notes:	<p>This antibody is suitable for the detection of thyroglobulin in ELISA, immunohistochemistry, immunoblotting and immunoprecipitation. For immunohistochemistry, both frozen sections and formalin fixed, paraffin-embedded tissue sections can be used without epitope retrieval or enzyme digestion. This antibody is specific for the 330 kDa thyroglobulin protein.</p> <p>Thyroglobulin shows a cytoplasmic localization. Thyroid tissue can be used as a positive control.</p>
Restrictions:	For Research Use only

## Handling

Format:	Liquid
Concentration:	1.6 mg/mL
Buffer:	0.02 M Potassium Phosphate, 0.5 M Sodium Chloride, pH 7.2
Preservative:	Sodium azide
Precaution of Use:	This product contains sodium azide: a POISONOUS AND HAZARDOUS SUBSTANCE which should be handled by trained staff only.
Storage:	-20 °C



Western Blotting

**Image 1.** Western blot using ROCKLAND Immunochemical's Mouse Mab-anti-Thyroglobulin antibody. Separation was achieved under reducing conditions using a pre-cast 5% Tris-HCl gel from Bio-Rad Laboratories. This antibody recognizes a single 330 kDa band corresponding to human thyroglobulin (left lane 3 ?g, right lane 3.0 ?g) as confirmed by the position of molecular weight markers (not shown). A 1:400 dilution of Mab anti-Thyroglobulin was used for 2h followed by detection using a 1:5,000 dilution of IRDye<sup>TM</sup>800 conjugated Goat-a-Mouse IgG [H&L] and visualization using the Infrared Imaging System developed by LI-COR. Other detection systems will yield similar results. IRDye is a trademark of LI-COR, Inc.