

Datasheet for ABIN129508
anti-pan Keratin antibody



[Go to Product page](#)

2 Images

Overview

Quantity:	100 µg
Target:	pan Keratin (panKRT)
Reactivity:	Human
Host:	Mouse
Clonality:	Monoclonal
Conjugate:	This pan Keratin antibody is un-conjugated
Application:	Western Blotting (WB), Immunohistochemistry (IHC), ELISA, Immunoprecipitation (IP)

Product Details

Immunogen:	This protein A purified monoclonal antibody was produced by repeated immunizations with purified human cytoskeletal preparations from A431 cells. Immunogenotype:Native
Clone:	C11
Isotype:	IgG1
Characteristics:	Concentration Definition: by UV absorbance at 280 nm

Target Details

Target:	pan Keratin (panKRT)
Alternative Name:	Keratin (panKRT Products)
Background:	Cytokeratins (CK) are intermediate filaments of epithelial cells, both in keratinizing tissue (i.e. skin) and non-keratinizing cells (i.e. mesothelial)

Target Details

Synonyms: PC2 antibody, Type II keratin isoform K6c antibody

Gene ID: 286887

UniProt: [P48668](#)

Application Details

Application Notes: This antibody is suitable for ELISA, immunohistochemistry, immunoblotting and immunoprecipitation. For a positive control use skin, colon carcinoma and squamous granulocyte carcinoma cells.

Restrictions: For Research Use only

Handling

Format: Liquid

Buffer: 0.02 M Potassium Phosphate, 0.15 M Sodium Chloride, pH 7.2

Preservative: Sodium azide

Precaution of Use: This product contains sodium azide: a POISONOUS AND HAZARDOUS SUBSTANCE which should be handled by trained staff only.

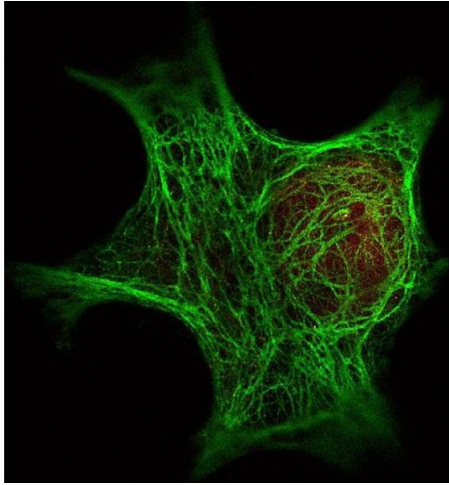
Storage: -20 °C

Images



Western Blotting

Image 1. Western blot using ROCKLAND Immunochemical's Mouse Anti-Keratin antibody. This antibody recognizes a single 56 kDa band corresponding to human keratin as confirmed by the position of molecular weight markers (not shown). Approximately 100 ng of keratin from human epidermis (Sigma p/n K0253) was applied under reducing conditions to a pre-cast 4-20% iGel from Gradipore Inc. A 1:400 dilution of Mab anti-Keratin was used for 2h followed by detection using a 1:5,000 dilution of IRDyeTM800 conjugated Goat-a-Mouse IgG [H&L] and visualization using the Infrared Imaging System developed by LI-COR. Other



detection systems will yield similar results. IRDye is a trademark of LI-COR, Inc.

Immunofluorescence

Image 2. Immunofluorescence Microscopy of Immunochemical's Anti-Keratin antibody () was used with Dylight 488 goat anti-mouse 610-141-121 (shown in green) to detect Keratin by Immunofluorescence. In the same experiment, polyclonal Anti-HDAC-1 antibody was used with Atto425 Anti-Rabbit IgG 611-151-122 (shown in red) to detect HDAC-1. Data was collected on a STED-CW TCS-SP5 Confocal system (Leica Microsystems) equipped with a DFC 350FX camera allowing sequential acquisition in wide-field, confocal and STED CW imaging modes and provided courtesy of: Myriam Gastard, PhD, personal communication, Leica Microsystems, Inc. USA