

Datasheet for ABIN129513

anti-PMS2 antibody

2 Images

[Go to Product page](#)

Overview

Quantity:	100 µg
Target:	PMS2
Reactivity:	Human
Host:	Mouse
Clonality:	Monoclonal
Conjugate:	This PMS2 antibody is un-conjugated
Application:	Western Blotting (WB), ELISA, Immunoprecipitation (IP)

Product Details

Immunogen:	<p>This protein A purified monoclonal antibody was produced by repeated immunizations with recombinant human PMS2 corresponding to the first 133 amino acid residues of the protein. The clone was produced using conventional hybridoma technology.</p> <p>Immunogenotype:Recombinant</p>
Clone:	349-29-5-2
Isotype:	IgG
Characteristics:	Concentration Definition: by UV absorbance at 280 nm

Target Details

Target:	PMS2
Alternative Name:	PMS2 (PMS2 Products)
Background:	PMS2 is a highly conserved nuclear protein involved in mismatch repair during DNA replication

Target Details

and has been identified to be composed as a heterodimer of PMS2 and MLH1. PMS is part of the BRCA1-associated genome surveillance complex (BASC), which contains BRCA1, MSH2, MSH6, MLH1, ATM, BLM, PMS2 and the RAD50-MRE11-NBS1 protein complex. This association could be a dynamic process changing throughout the cell cycle and within subnuclear domains. Defects in PMS2 are the cause of hereditary non-polyposis colorectal cancer type 4 (HNPCC4), Turcot syndrome (an autosomal dominant disorder characterized by malignant tumors of the brain associated with multiple colorectal adenomas) and supratentorial primitive neuroectodermal tumors with cafe-au-lait spots (SNTCL). The human PMS2 gene encodes an 862 aa, 96 kDa polypeptide.

Synonyms: DNA mismatch repair gene homologue antibody, H_DJ0042M02.9 antibody, HNPCC4 antibody, PMS 2 antibody, PMS1 protein homolog 2 antibody, PMS2 postmeiotic segregation increased 2 antibody, PMS2CL antibody, PMSL2 antibody

Gene ID: 5395

UniProt: [P54278](#)

Pathways: [DNA Damage Repair](#), [Production of Molecular Mediator of Immune Response](#)

Application Details

Application Notes: This antibody has been tested for use in ELISA, western blotting and immunoprecipitation. Specific conditions for western blotting reactivity should be optimized by the end user. Expect a band approximately 96 kDa in size corresponding to human PMS2 by western blotting in most cell lines and tissues as PMS2 is ubiquitously expressed.

Restrictions: For Research Use only

Handling

Format: Liquid

Concentration: 1.38 mg/mL

Buffer: 0.02 M Potassium Phosphate, 0.15 M Sodium Chloride, pH 7.2

Preservative: Sodium azide

Precaution of Use: This product contains sodium azide: a POISONOUS AND HAZARDOUS SUBSTANCE which should be handled by trained staff only.

Storage: -20 °C

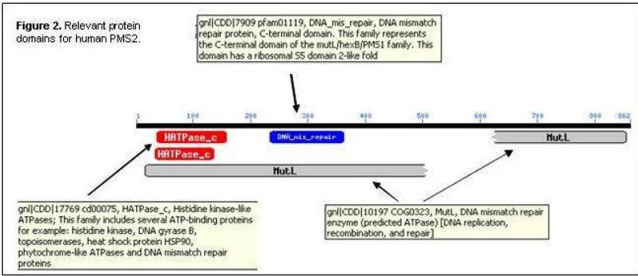
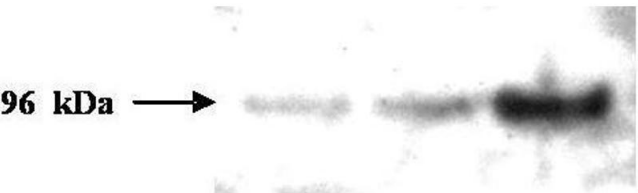


Image 1. Relevant protein domains for human PMS2.



Western Blotting

Image 2. Western blot analysis is shown using Protein A Purified Mouse Monoclonal Anti-PMS2 antibody to detect human PMS2 protein present in H157 cell lysates. Approximately 5,10 and 30 ug of cell lysate was loaded on a 4-12% NuPage SDS-PAGE gel using MES buffer. The blot was incubated with a 1:1,000 dilution of the antibody at room temperature followed by washing. A 1:20,000 dilution of HRP conjugated Gt-anti-Mouse IgG preceded color development using Pierce Chemical's substrate. Comparison to a molecular weight marker (not shown) indicates a single band of ~96.0 kDa corresponding to the expected molecular weight for human PMS2 protein. Other detection systems will yield similar results. Personal communication Morphotek Inc.