

Datasheet for ABIN129515

anti-CENPE antibody[Go to Product page](#)

1 Image

Overview

Quantity:	100 µg
Target:	CENPE
Reactivity:	Human
Host:	Mouse
Clonality:	Monoclonal
Conjugate:	This CENPE antibody is un-conjugated
Application:	Western Blotting (WB), Immunoprecipitation (IP)

Product Details

Immunogen:	This protein A purified monoclonal antibody was produced by repeated immunizations with a full length recombinant protein corresponding to human CENP-E protein. Immunogen type: Recombinant
Clone:	1H12
Isotype:	IgG
Characteristics:	Concentration Definition: by UV absorbance at 280 nm

Target Details

Target:	CENPE
Alternative Name:	CENP-E (CENPE Products)
Background:	CENP-E, Centrosome-associated protein E, is a kinesin-like minus-end directed microtubule motor protein that accumulates in the G ₂ phase of the cell cycle. Unlike other centrosome-

Target Details

associated proteins, it is not present during interphase and first appears at the centromere region of chromosomes during prometa-phase. CENP-E is proposed to be one of the motors responsible for mammalian chromosome movement and/or spindle elongation. CENP-E interacts with CENP-F and BUBR1 kinase. CENP-E associates with kinetochores during congression, relocates to the spindle midzone at anaphase, and is quantitatively discarded at the end of the cell division.

Synonyms: Centromeric protein E antibody, KIF10 antibody, Kinesin family member 10 antibody

Gene ID: 1062

UniProt: [Q02224](#)

Pathways: [M Phase](#), [Maintenance of Protein Location](#)

Application Details

Application Notes: This protein A purified antibody has been tested for use in immunoprecipitation, immunofluorescence staining and western blot and is capable of detecting endogenous protein. Specific conditions for reactivity should be optimized by the end user. Expect a predominant band at ~ 320 kDa corresponding to full-length protein by western blotting in the appropriate cell lysate or extract.

Restrictions: For Research Use only

Handling

Format: Liquid

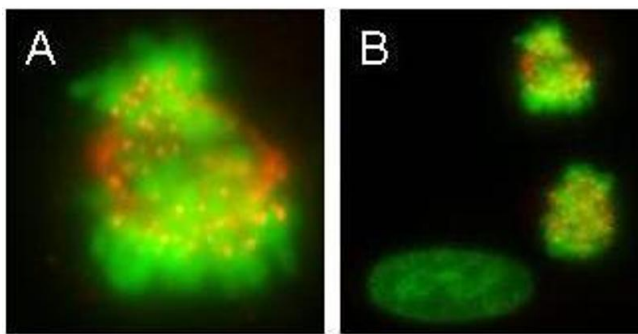
Concentration: 1.0 mg/mL

Buffer: 0.02 M Potassium Phosphate, 0.15 M Sodium Chloride, pH 7.2

Preservative: Sodium azide

Precaution of Use: This product contains sodium azide: a POISONOUS AND HAZARDOUS SUBSTANCE which should be handled by trained staff only.

Storage: -20 °C



Immunofluorescence

Image 1. monoclonal anti-CENPE antibody was used to detect CENPE protein, visible as discrete nuclear dots on prometaphase and metaphase cells that relocate to the spindle midzone at anaphase (panel A). Interphase cells show no discrete staining (bottom left, panel B). HeLa cells were fixed in paraformaldehyde and stained using this primary antibody. AlexaFluor 555 TM conjugated anti-Mouse antibody (red) was used for detection. DNA was stained using bis-benzimide (DAPI) (green). Personal Communication, Tim Yen, Fox Chase Cancer Center, Philadelphia, PA.