

Datasheet for ABIN129529

**anti-UBA1 antibody****1** Image[Go to Product page](#)

## Overview

Quantity:	500 µg
Target:	UBA1
Reactivity:	Human
Host:	Rabbit
Clonality:	Polyclonal
Conjugate:	This UBA1 antibody is un-conjugated
Application:	Western Blotting (WB), ELISA, Immunohistochemistry (IHC)

## Product Details

Immunogen:	Anti-Ubiquitin Activating Enzyme E1 antibody was prepared from whole rabbit serum produced by repeated immunizations with a recombinant protein corresponding to full length Human Ubiquitin Activating Enzyme E1. Immunogenotype:Recombinant
Isotype:	IgG
Characteristics:	Concentration Definition: by UV absorbance at 280 nm

## Target Details

Target:	UBA1
Alternative Name:	Ubiquitin Activating Enzyme E1 ( <a href="#">UBA1 Products</a> )
Background:	Ubiquitin Activating Enzyme (E1), also known as A1S9 and UBE1, is responsible for the first step in ubiquitin-protein isopeptide bond formation. E1 catalyzes the activation of the C-terminal

## Target Details

carboxyl group of ubiquitin by forming a high-energy thioester bond in an ATP-dependent manner. UBE1 is monomeric and contains two active sites within the E1 molecule, allowing it to bind two ubiquitin moieties at a time, with a new ubiquitin forming an adenylate intermediate as the previous one is transferred to the thiol site. Alternative splicing results in 2 transcript variants encoding the same protein, but with different 5' UTR. Isoform 1 has a different 5' noncoding exon compared to isoform 2. Both variants encode the same protein.

Synonyms: A1S9 antibody, A1S9 protein antibody, A1S9T and BN75 temperature sensitivity complementing antibody, A1S9T antibody, A1ST antibody, GXP 1 antibody

Gene ID: 7317, 23510338

UniProt: [P22314](#)

## Application Details

Application Notes: This purified antibody has been tested for use in ELISA, immunohistochemistry and western blot. Specific conditions for reactivity should be optimized by the end user. Expect a band at ~118 kDa in size corresponding to UBE1 by western blotting in the appropriate cell lysate or extract.

Restrictions: For Research Use only

## Handling

Format: Lyophilized

Reconstitution: Restore with deionized water (or equivalent)

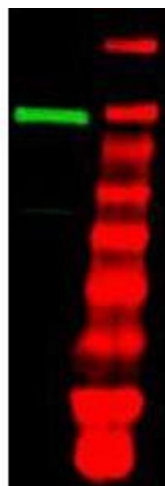
Concentration: 5.0 mg/mL

Buffer: 0.02 M Potassium Phosphate, 0.15 M Sodium Chloride, pH 7.2

Preservative: Sodium azide

Precaution of Use: This product contains sodium azide: a POISONOUS AND HAZARDOUS SUBSTANCE which should be handled by trained staff only.

Storage: 4 °C



#### Western Blotting

**Image 1.** Western blot using purified anti-Ubiquitin Activating Enzyme (E1) antibody shows detection of a band at ~118 kDa corresponding to UBE1 (lane 1 800 nm channel). Approximately 35 µg of an A431 whole cell lysate was separated on a 4-20% Tris-Glycine gel by SDS-PAGE and transferred onto nitrocellulose. After blocking the membrane was probed with the primary antibody diluted to 1:1,000. Incubation was for 2 h at room temperature followed by washes and reaction with a 1:10,000 dilution of 800 conjugated Gt-a-Rabbit IgG [H&L] MX10 for 45 min at room temperature. Molecular weight markers are shown in lane 2 (700 nm channel). 800 fluorescence image was captured using the Infrared Imaging System developed by LI-COR. IRDye is a trademark of LI-COR, Inc. Other detection systems will yield similar results.