

Datasheet for ABIN129549
anti-MTBP antibody (AA 667-812)[Go to Product page](#)

1 Image

Overview

Quantity:	100 µL
Target:	MTBP
Binding Specificity:	AA 667-812
Reactivity:	Human
Host:	Mouse
Clonality:	Monoclonal
Conjugate:	This MTBP antibody is un-conjugated
Application:	ELISA, Western Blotting (WB)

Product Details

Immunogen:	This protein A purified monoclonal antibody was produced by repeated immunizations with a recombinant amino-terminal HIS ₆ X-tagged polypeptide corresponding to amino acid residues 667-812 of human MTBP protein.
Clone:	PHL-1
Cross-Reactivity:	Chimpanzee
Purification:	ASCITES

Target Details

Target:	MTBP
Alternative Name:	MTBP (MTBP Products)

Target Details

Background:	<p>The MDM2 onco-protein is over expressed in human cancer cells and it promotes tumorigenesis by directly blocking the function of the p53 tumor suppressor. Studies also indicate that MDM2 regulates cell proliferation via p53 independent mechanisms. MTBP (Mdm2 [Two] Binding Protein) was identified by a yeast two-hybrid screen as an MDM2 binding protein (1). MTBP has been reported to modulate cell cycle progression by a p53 independent mechanism and suppress MDM2-mediated p53 degradation when ectopically expressed in cells (1,2). The human MTBP gene localizes to 8q24 (3) and MTBP RNA is expressed in a wide range of tissues, with highest being in the thymus, testes and ovaries (1).</p> <p>Synonyms: MDM 2 BP antibody, MDM2 (mouse double minute 2) binding protein 104kD antibody, MDM2 (mouse double minute 2) binding protein antibody, MDM2 Binding Protein antibody, MDM2 BP antibody</p>
-------------	---

Gene ID:	27085
----------	-------

NCBI Accession:	NP_071328
-----------------	---------------------------

UniProt:	Q96DY7
----------	------------------------

Application Details

Application Notes:	This antibody has been tested for use in ELISA and western blot. Specific conditions for reactivity should be optimized by the end user. Expect a band ~ 110 kDa in size corresponding to MTBP by western blotting in the appropriate cell lysate or extract.
--------------------	---

Restrictions:	For Research Use only
---------------	-----------------------

Handling

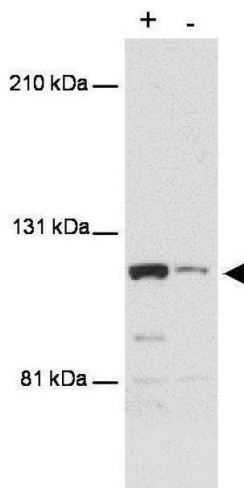
Format:	Liquid
---------	--------

Buffer:	0.02 M Potassium Phosphate, 0.15 M Sodium Chloride, pH 7.2
---------	--

Preservative:	Sodium azide
---------------	--------------

Precaution of Use:	This product contains sodium azide: a POISONOUS AND HAZARDOUS SUBSTANCE which should be handled by trained staff only.
--------------------	--

Storage:	-20 °C
----------	--------



Western Blotting

Image 1. Western blot using anti-MTBP antibody shows detection of a band ~110 kDa corresponding to human MTBP (arrowhead). Lanes represent human 293 cell lysates with (+) and without transfection with a full-length human expression MTBP construct. The transfected cell extract was diluted 30 fold in extract lacking transfected MTBP. Proteins were separated by SDS-PAGE and transferred onto PDVF membrane. After blocking, the membrane was probed with the primary antibody diluted to 1:500 for 2h at room temperature followed by detection using a Lumi-LightPlus Western Blotting Kit (Roche).