

Datasheet for ABIN129550
anti-ING1 antibody (AA 285-296)[Go to Product page](#)

2 Images

Overview

Quantity:	100 µg
Target:	ING1
Binding Specificity:	AA 285-296
Reactivity:	Human
Host:	Goat
Clonality:	Polyclonal
Conjugate:	This ING1 antibody is un-conjugated
Application:	Western Blotting (WB), ELISA

Product Details

Immunogen:	This affinity purified antibody was prepared from whole Goat serum produced by repeated immunizations with a synthetic peptide corresponding aa 285-296 of Human p33 ING1 protein (Inhibitor of growth family, member 1). This sequence shows 100% homology to all splice variants for ING1.
Isotype:	IgG
Characteristics:	Concentration Definition: by UV absorbance at 280 nm

Target Details

Target:	ING1
Alternative Name:	p33 ING1 (ING1 Products)
Background:	P33 ING1 is a tumor suppressor protein that can induce cell growth arrest and apoptosis. The

Target Details

encoded protein is a nuclear protein that physically interacts with the tumor suppressor protein TP53 and is a component of the p53-signaling pathway. Reduced expression and rearrangement of this gene have been detected in various cancers. Multiple alternatively spliced transcript variants encoding distinct isoforms have been reported. The accession number listed below is for variant (4) that encodes the longest isoform (D). Other synonyms for p33 ING1 include p33, p47, p33ING1, p24ING1c, p33ING1b, p47ING1a, growth inhibitor ING1, inhibitor of growth 1, tumor suppressor ING1 and growth inhibitory protein ING1. Synonyms: Growth inhibitory protein ING1 antibody, Homo sapiens growth inhibitor p33ING1 (ING1) mRNA, complete cds antibody, ING 1 antibody, Inhibitor of growth 1 antibody, Inhibitor of growth family member 1 antibody

Gene ID: 3621, 38201661

UniProt: [Q9UK53](#)

Pathways: [Protein targeting to Nucleus](#), [Autophagy](#)

Application Details

Application Notes: This affinity-purified antibody has been tested for use in ELISA and western blotting using over expressed cell lysates. Expect a band approximately 47 kDa, 33 kDa or 24 kDa in size corresponding to variants of ING1 by western blotting in the appropriate cell lysate or extract. Specific conditions for other applications should be optimized by the end user.

Restrictions: For Research Use only

Handling

Format: Liquid

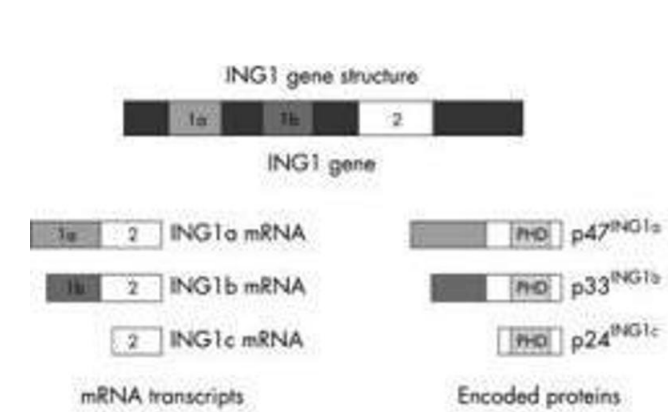
Concentration: 1.0 mg/mL

Buffer: 0.02 M Potassium Phosphate, 0.15 M Sodium Chloride, pH 7.2

Preservative: Sodium azide

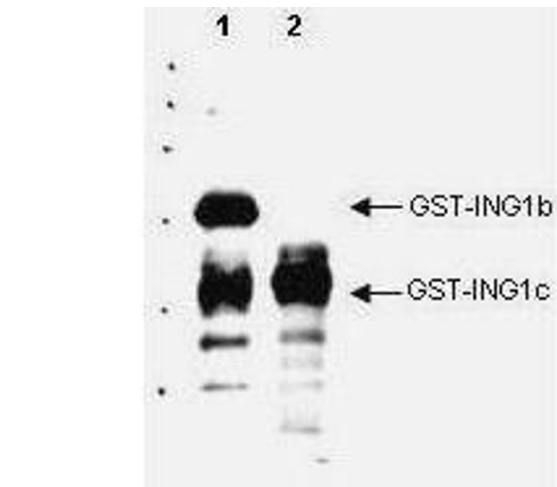
Precaution of Use: This product contains sodium azide: a POISONOUS AND HAZARDOUS SUBSTANCE which should be handled by trained staff only.

Storage: -20 °C



Western Blotting

Image 1. Anti-p33 ING1 Antibody - Western Blot



Western Blotting

Image 2. Western blot analysis is shown using Affinity Purified anti-p33 ING1 antibody to detect over expressed Human ING1 present in cell nuclear extracts. This western blot shows reactivity with purified recombinant GST tagged human ING1b (lane 1) and ING1c protein (lane 2). No reactivity is seen against GST or other ING proteins (not shown). Reactivity of this polyclonal antibody is similar to the specificity of a positive control monoclonal antibody (not shown). The blot was incubated with a 1:1,000 dilution of the antibody at room temperature followed by detection using standard techniques. Personal communication Xiaolan Feng, U. Calgary.