

Datasheet for ABIN129554

anti-gamma 1 Adaptin antibody (AA 646-659)[Go to Product page](#)**1** Image

Overview

Quantity:	100 µg
Target:	gamma 1 Adaptin (AP1G1)
Binding Specificity:	AA 646-659
Reactivity:	Human
Host:	Goat
Clonality:	Polyclonal
Conjugate:	This gamma 1 Adaptin antibody is un-conjugated
Application:	Western Blotting (WB), ELISA

Product Details

Immunogen:	This affinity purified antibody was prepared from whole goat serum produced by repeated immunizations with a synthetic peptide corresponding aa 646-659 of Human AP1G1.
Isotype:	IgG
Characteristics:	Concentration Definition: by UV absorbance at 280 nm

Target Details

Target:	gamma 1 Adaptin (AP1G1)
Alternative Name:	AP1G1 (AP1G1 Products)
Background:	AP1G1 (also known as gamma 1 subunit of adaptor -related protein complex 1, Gamma-adaptin, Adaptor protein complex AP-1 gamma-1 subunit, Golgi adaptor HA1/AP1 adaptin gamma-1 subunit and Clathrin assembly protein complex 1 gamma-1 large chain) is a subunit

Target Details

of clathrin-associated adaptor protein complex 1 that plays a role in protein sorting in the late-Golgi/trans-Golgi network (TGN) and/or endosomes. The AP complexes mediate both the recruitment of clathrin to membranes and the recognition of sorting signals within the cytosolic tails of transmembrane cargo molecules. The adaptin family of proteins is composed of four classes of molecules named alpha, beta-, beta prime- and gamma- adaptins. Adaptins, together with medium and small subunits, form a heterotetrameric complex called an adaptor, whose role is to promote the formation of clathrin-coated pits and vesicles. AP1G1 is localized to the coat surrounding the cytoplasmic face of coated vesicles located at the Golgi complex and is widely expressed.

Synonyms: AP-1 complex subunit gamma-1 Adapter-related protein complex 1 subunit gamma-1 Adaptor protein complex AP-1 subunit gamma-1 Golgi adaptor HA1/AP1 adaptin subunit gamma-1 Gamma1-adaptin Clathrin assembly protein complex 1 gamma-1 large chain

Gene ID: 164, 71772942

UniProt: [O43747](#)

Application Details

Application Notes: This affinity purified antibody has been tested for use in ELISA and by western blot. Specific conditions for reactivity should be optimized by the end user. Expect a band approximately 91 kDa in size corresponding to AP1G1 by western blotting in the appropriate cell lysate or extract.

Restrictions: For Research Use only

Handling

Format: Liquid

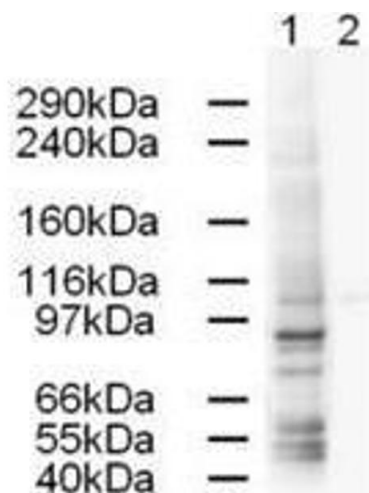
Concentration: 0.7 mg/mL

Buffer: 0.02 M Potassium Phosphate, 0.15 M Sodium Chloride, pH 7.2

Preservative: Sodium azide

Precaution of Use: This product contains sodium azide: a POISONOUS AND HAZARDOUS SUBSTANCE which should be handled by trained staff only.

Storage: -20 °C



Western Blotting

Image 1. Western blot using Affinity Purified anti-AP1G1 antibody shows strong detection of a 91-kDa band corresponding to Human AP1G1 in a HeLa whole cell lysate (lane 1). Peptide competition (using 1 µg/ml of the immunizing peptide) blocks the specific reactivity of this antibody with AP1G1 (lane 2). Approximately 20 µg of each lysate was run on a SDS-PAGE and transferred onto nitrocellulose followed by reaction with a 1:500 dilution of anti-AP1G1 antibody. Detection occurred using a 1:5,000 dilution of HRP-labeled Rabbit anti-Goat IgG for 1 hour at room temperature. A chemi-luminescence system was used for signal detection (Roche) using a 60-sec exposure time.