

Datasheet for ABIN129555

anti-AP3D1 antibody (AA 675-700)



[Go to Product page](#)

1 Image

2 Publications

Overview

Quantity:	100 µg
Target:	AP3D1
Binding Specificity:	AA 675-700
Reactivity:	Human
Host:	Goat
Clonality:	Polyclonal
Application:	Western Blotting (WB), ELISA, Immunoprecipitation (IP)

Product Details

Purpose:	AP3D1 Antibody
Immunogen:	Immunogen: This affinity purified antibody was prepared from whole goat serum produced by repeated immunizations with a synthetic peptide corresponding to an internal region near aa 675-700 of Human AP3D1. Immunogen Type: Conjugated Peptide
Isotype:	IgG
Cross-Reactivity (Details):	This affinity purified antibody is directed against human AP3D1.
Characteristics:	Synonyms: goat anti-AP3D1 antibody, AP-3 complex subunit delta-1, Adapter-related protein complex 3 subunit delta-1, AP-3 complex subunit delta, Delta-adaptin
Purification:	The product was affinity purified from antiserum by immunoaffinity purification.
Sterility:	Sterile filtered

Target Details

Target:	AP3D1
Alternative Name:	AP3D1 (AP3D1 Products)
Background:	Background: AP3D1 (also known as Delta-adaptin 3, AP-3 complex delta subunit and Delta-adaptin) is a subunit of the AP3 adaptor-like complex, which is not associated with clathrin. The AP3D1 subunit is implicated in intracellular biogenesis and trafficking of pigment granules and possibly platelet dense granules and neurotransmitter vesicles.
Gene ID:	8943, 117553580
UniProt:	O14617

Application Details

Application Notes:	<p>Application Note: This affinity purified antibody has been tested for use in ELISA and by western blot. Specific conditions for reactivity should be optimized by the end user. Expect a band approximately 130 kDa in size corresponding to AP3D1 by western blotting in the appropriate cell lysate or extract. Multiple isoforms exist for this protein.</p> <p>Western Blot Dilution: 1:500 - 1:2,000</p> <p>Immunoprecipitation Dilution: 1:100</p> <p>ELISA Dilution: 1:5,000 - 1:20,000</p> <p>Other: User Optimized</p>
Restrictions:	For Research Use only

Handling

Format:	Liquid
Concentration:	1.6 mg/mL
Buffer:	Buffer: 0.02 M Potassium Phosphate, 0.15 M Sodium Chloride, pH 7.2 Stabilizer: None Preservative: 0.01 % (w/v) Sodium Azide
Preservative:	Sodium azide
Precaution of Use:	This product contains Sodium azide: a POISONOUS AND HAZARDOUS SUBSTANCE which should be handled by trained staff only.
Storage:	4 °C,-20 °C
Storage Comment:	Store vial at -20° C prior to opening. Aliquot contents and freeze at -20° C or below for extended

Handling

storage. Avoid cycles of freezing and thawing. Centrifuge product if not completely clear after standing at room temperature. This product is stable for several weeks at 4° C as an undiluted liquid. Dilute only prior to immediate use.

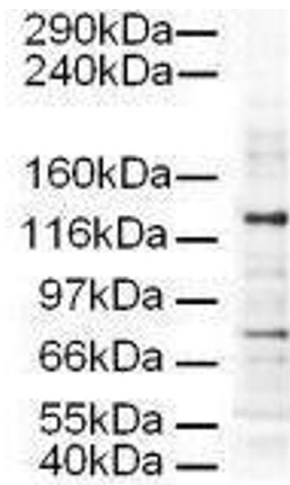
Expiry Date: 12 months

Publications

Product cited in: Zheng, Saunders, Sorensen, Waxmonsky, Conner: "Notch signaling from the endosome requires a conserved dileucine motif." in: **Molecular biology of the cell**, Vol. 24, Issue 3, pp. 297-307, (2013) ([PubMed](#)).

Concepcion, Flores-Garcuia, Hamilton: "Multipotent genetic suppression of retrotransposon-induced mutations by Nxf1 through fine-tuning of alternative splicing." in: **PLoS genetics**, Vol. 5, Issue 5, pp. e1000484, (2009) ([PubMed](#)).

Images



Western Blotting

Image 1. Western blot using Affinity Purified anti-AP3D1 antibody shows detection of a 130-kDa band corresponding to Human AP3D1 in a HeLa whole cell lysate. The lower molecular weight band most likely represents non-specific binding. Approximately 20 µg of lysate was run on a SDS-PAGE and transferred onto nitrocellulose followed by reaction with a 1:500 dilution of anti-AP3D1 antibody. Detection occurred using a 1:5,000 dilution of HRP-labeled Rabbit anti-Goat IgG for 1 hour at room temperature. A chemiluminescence system was used for signal detection (Roche) using a 30-sec exposure time.