

Datasheet for ABIN129558
anti-DCLRE1C antibody (AA 482-495)

2 Images

[Go to Product page](#)

Overview

Quantity:	100 µg
Target:	DCLRE1C
Binding Specificity:	AA 482-495
Reactivity:	Human
Host:	Goat
Clonality:	Polyclonal
Conjugate:	This DCLRE1C antibody is un-conjugated
Application:	Western Blotting (WB), ELISA, Immunohistochemistry (IHC)

Product Details

Immunogen:	This affinity purified antibody was prepared from whole goat serum produced by repeated immunizations with a synthetic peptide corresponding aa 482-495 of Human ARTEMIS (DCLRE1C DNA cross-link repair 1C).
Isotype:	IgG
Characteristics:	Concentration Definition: by UV absorbance at 280 nm

Target Details

Target:	DCLRE1C
Alternative Name:	Artemis (DCLRE1C Products)
Background:	Artemis has a role in T and B lymphocyte immunodeficiency and in predisposition to lymphoma through the NHEJ pathway of DNA repair. DNA-PKcs regulates Artemis by both

Target Details

phosphorylation and complex formation to permit enzymatic activities that are critical for the hairpin-opening step of V(D)J recombination and for the 5' and 3' overhang processing in non-homologous DNA end joining.

Synonyms: A SCID antibody, A SCID protein antibody, Artemis protein antibody, ASCID antibody, DCLRE1C antibody, DCLRE1C DNA cross link repair 1C antibody, DCLRE1C protein antibody

Gene ID: 64421, 76496495

UniProt: [Q96SD1](#)

Pathways: [DNA Damage Repair](#)

Application Details

Application Notes: This affinity purified antibody has been tested for use in ELISA, immunohistochemistry and western blotting. Reactivity in other immunoassays is unknown. This antibody detects a band of approximately 90 kDa (predicted molecular weight: 78 kDa).

Restrictions: For Research Use only

Handling

Format: Liquid

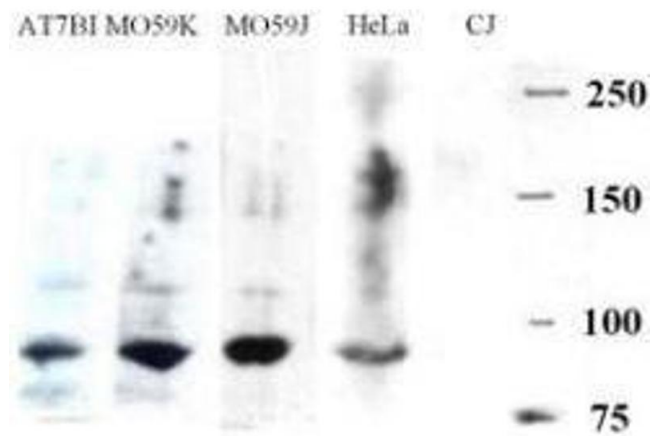
Concentration: 1.2 mg/mL

Buffer: 0.02 M Potassium Phosphate, 0.15 M Sodium Chloride, pH 7.2

Preservative: Sodium azide

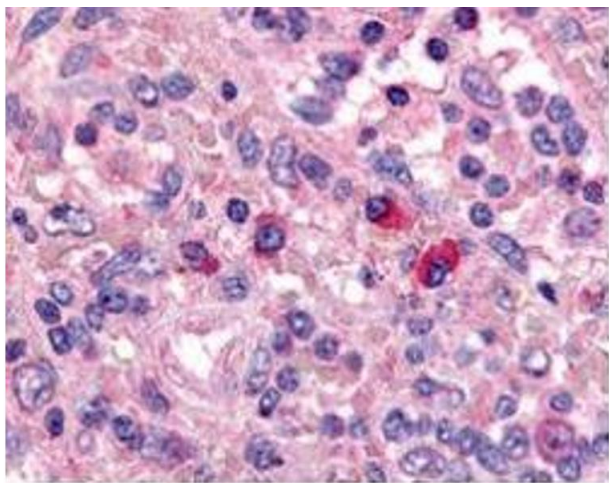
Precaution of Use: This product contains sodium azide: a POISONOUS AND HAZARDOUS SUBSTANCE which should be handled by trained staff only.

Storage: -20 °C



Western Blotting

Image 1. Western blotting. Goat-anti-Artemis was used at a 1:500 dilution to detect Artemis in various cell lysates by Western blot. CJ is an Artemis deficient cell line and so no band is visible.



Immunohistochemistry

Image 2. Affinity Purified anti-Artemis antibody was used at a 1:1000 dilution to detect Artemis by immunohistochemistry in human spleen. Positive staining of T cells and B lymphocytes is observed in thymus, lymph nodes and spleen. Tissue was formalin-fixed and paraffin embedded. Personal Communication, Alan Yen, LifeSpanBiosciences, Seattle, WA.