

Datasheet for ABIN129586

anti-LIM Domain Binding 2 Protein antibody (AA 107-120)[Go to Product page](#)**1** Image

Overview

Quantity:	100 µg
Target:	LIM Domain Binding 2 Protein (LDB2)
Binding Specificity:	AA 107-120
Reactivity:	Mouse
Host:	Rabbit
Clonality:	Polyclonal
Conjugate:	This LIM Domain Binding 2 Protein antibody is un-conjugated
Application:	Western Blotting (WB), ELISA

Product Details

Immunogen:	This affinity purified antibody was prepared from whole rabbit serum produced by repeated immunizations with a synthetic peptide corresponding to aa 107-120 of Mouse LDB2.
Isotype:	IgG
Cross-Reactivity:	Human, Chimpanzee, Dog (Canine), Rat (Rattus), Chicken
Characteristics:	Concentration Definition: by UV absorbance at 280 nm

Target Details

Target:	LIM Domain Binding 2 Protein (LDB2)
Alternative Name:	LDB2 (LDB2 Products)
Background:	LDB2 (LIM homeobox protein cofactor CLIM-1a). It is suggested that LIM domain binding

Target Details

proteins (LDB1, LDB2 and LDB3) act synergistically to enhance transcriptional efficiency by acting as co-factors for LIM homeodomain and Otx class transcription factors both of which have essential roles in development. LDB2 is a close homologue of LDB1. LDBs are homologs of the Drosophila Chip protein. Three members of the Ldb gene family (Ldb1, Ldb2 and Ldb3) from the zebrafish, Danio rerio, share 95%, 73% and 62% amino acid identity with mouse Ldb1, respectively.

Synonyms: Carboxyl terminal LIM domain protein 1 antibody, CLIM 1 antibody, LIM domain binding 2 antibody, LIM domain binding factor 2 antibody, LIM domain binding factor CLIM 1 antibody

Gene ID: 16826, 116642898

UniProt: [O55203](#)

Pathways: [Stem Cell Maintenance](#)

Application Details

Application Notes: This affinity purified antibody has been tested for use in ELISA and by western blot. Specific conditions for reactivity should be optimized by the end user. Expect a band approximately 43 kDa in size corresponding to LDB2 by western blotting in the appropriate cell lysate or extract.

Restrictions: For Research Use only

Handling

Format: Liquid

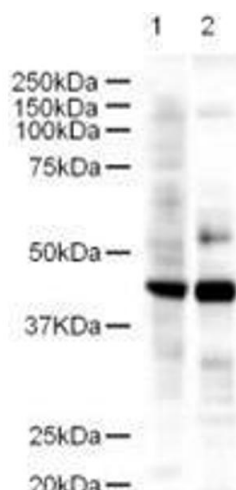
Concentration: 1.06 mg/mL

Buffer: 0.02 M Potassium Phosphate, 0.15 M Sodium Chloride, pH 7.2

Preservative: Sodium azide

Precaution of Use: This product contains sodium azide: a POISONOUS AND HAZARDOUS SUBSTANCE which should be handled by trained staff only.

Storage: -20 °C



Western Blotting

Image 1. Western blot using Affinity Purified anti-LDB2 antibody shows detection of a 43-kDa band corresponding to LDB2 in a lysates prepared from human kidney (lane 1) and mouse spleen (lane 2) tissues. Approximately 18 µg of lysate was run on a SDS-PAGE and transferred onto nitrocellulose followed by reaction with a 1:500 dilution of anti-LDB2 antibody. Detection occurred using a 1:5,000 dilution of HRP-labeled Goat anti-Rabbit IgG for 1 hour at room temperature. A chemiluminescence system was used for signal detection (Roche) using a 1 min exposure time.