

Datasheet for ABIN129591
anti-PACRG antibody (AA 204-215)[Go to Product page](#)

1 Image

Overview

Quantity:	100 µg
Target:	PACRG
Binding Specificity:	AA 204-215
Reactivity:	Human
Host:	Rabbit
Clonality:	Polyclonal
Conjugate:	This PACRG antibody is un-conjugated
Application:	Western Blotting (WB), ELISA

Product Details

Immunogen:	This affinity purified antibody was prepared from whole rabbit serum produced by repeated immunizations with a synthetic peptide corresponding to amino acids 204-215 of Human PACRG protein.
Isotype:	IgG
Cross-Reactivity:	Human, Mouse (Murine), Chicken
Characteristics:	Concentration Definition: by UV absorbance at 280 nm

Target Details

Target:	PACRG
Alternative Name:	PACRG (PACRG Products)

Target Details

Background:	<p>PACRG (also known as Parkin coregulated gene protein and PARK2 coregulated) is a gene located very close to parkin, in reverse orientation on the chromosome. It is thought to be co-transcribed with parkin by a bi-directional promoter between the two genes. PACRG is expressed in all immune tissues, spleen, lymph nodes, thymus, tonsils, leukocyte and bone marrow and is also expressed in heart, brain, skeletal muscle, kidney, lung and pancreas. PACRG is expressed in primary Schwann cells and very weakly by monocyte-derived macrophages, which are the primary host cells of Mycobacterium leprae, the causative agent of leprosy. Splice variants have been described for this protein.</p> <p>Synonyms: FLJ32724 antibody, GLUP antibody, HAK005771 antibody, Molecular chaperone/chaperonin binding protein antibody, PARK 2 co regulated antibody, PARK 2 coregulated antibody</p>
-------------	---

Gene ID:	135138, 21040407
----------	------------------

UniProt:	Q96M98
----------	------------------------

Application Details

Application Notes:	This affinity purified antibody has been tested for use in ELISA and western blot.
--------------------	--

Restrictions:	For Research Use only
---------------	-----------------------

Handling

Format:	Liquid
---------	--------

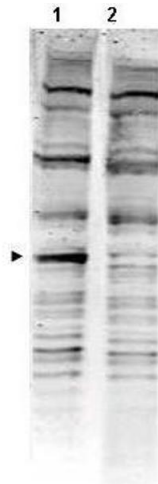
Concentration:	1.6 mg/mL
----------------	-----------

Buffer:	0.02 M Potassium Phosphate, 0.15 M Sodium Chloride, pH 7.2
---------	--

Preservative:	Sodium azide
---------------	--------------

Precaution of Use:	This product contains sodium azide: a POISONOUS AND HAZARDOUS SUBSTANCE which should be handled by trained staff only.
--------------------	--

Storage:	-20 °C
----------	--------



Western Blotting

Image 1. Western blot using Affinity Purified anti-PACRG antibody shows detection of a band ~40 kDa corresponding to human PACRG (arrowhead lane 1). Specific reactivity with this band is blocked when the antibody is pre-incubated with the immunizing peptide (lane 2). Approximately 35 ug of a mouse embryonic fibroblast (MEF) whole cell lysate was separated by 4-20% SDS-PAGE and transferred onto nitrocellulose. After blocking the membrane was probed with the primary antibody diluted to 1:1,500 for 2h at room temperature followed by washes and reaction with a 1:10,000 dilution of IRDye800 conjugated Gt-a-Rabbit IgG [H&L] MX for 45 min at room temperature. IRDye800 fluorescence image was captured using the Infrared Imaging System developed by LI-COR. IRDye is a trademark of LI-COR, Inc. Other detection systems will yield similar results.