



[Go to Product page](#)

Datasheet for ABIN129626  
**anti-SPRY4 antibody (AA 306-322)**

2 Images

Overview

Quantity:	100 µg
Target:	SPRY4
Binding Specificity:	AA 306-322
Reactivity:	Human
Host:	Rabbit
Clonality:	Polyclonal
Conjugate:	This SPRY4 antibody is un-conjugated
Application:	Western Blotting (WB), ELISA, Immunohistochemistry (IHC)

Product Details

Immunogen:	This affinity purified antibody was prepared from whole rabbit serum produced by repeated immunizations with a synthetic peptide corresponding to amino acids 306-322 of Human Sprouty-4 protein.
Isotype:	IgG
Cross-Reactivity:	Chimpanzee
Characteristics:	Concentration Definition: by UV absorbance at 280 nm

Target Details

Target:	SPRY4
Alternative Name:	Sprouty-4 ( <a href="#">SPRY4 Products</a> )

## Target Details

---

**Background:** Sprouty-4 (also known as SPRY4) is an inhibitor of the insulin receptor and EGFR-transduced mitogen-activated protein kinase (MAPK) signaling pathway downstream of FGF and EGF receptor tyrosine kinase activation. It is positioned upstream of RAS activation and impairs the formation of active GTP-RAS. SPRY4 is widely expressed, with different isoforms. The protein consists of 322 amino acids, with a cysteine-rich region, Src homology 3 binding regions, proline-rich regions, and a PEST sequence. It is expressed predominantly in the cytoplasm. Northern results show bands across most tissues, with strongest expression in heart, brain, placenta, lung, and intestine.

Synonyms: Sprouty-4, SPRY4

---

**Gene ID:** 81848, 42741659

---

**UniProt:** [P08183](#)

## Application Details

---

**Application Notes:** This affinity purified antibody has been tested for use in ELISA, immunohistochemistry and western blot. Specific conditions for reactivity should be optimized by the end user. Expect a band (maybe a doublet) ~35 kDa in size corresponding to Sprouty-4 by western blotting in the appropriate cell lysate or extract. Some non-specific banding may be observed using this antibody.

---

**Restrictions:** For Research Use only

## Handling

---

**Format:** Liquid

---

**Concentration:** 1.1 mg/mL

---

**Buffer:** 0.02 M Potassium Phosphate, 0.15 M Sodium Chloride, pH 7.2

---

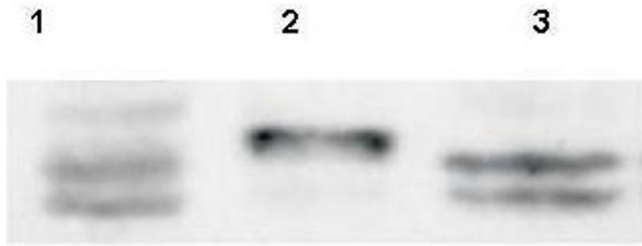
**Preservative:** Sodium azide

---

**Precaution of Use:** This product contains sodium azide: a POISONOUS AND HAZARDOUS SUBSTANCE which should be handled by trained staff only.

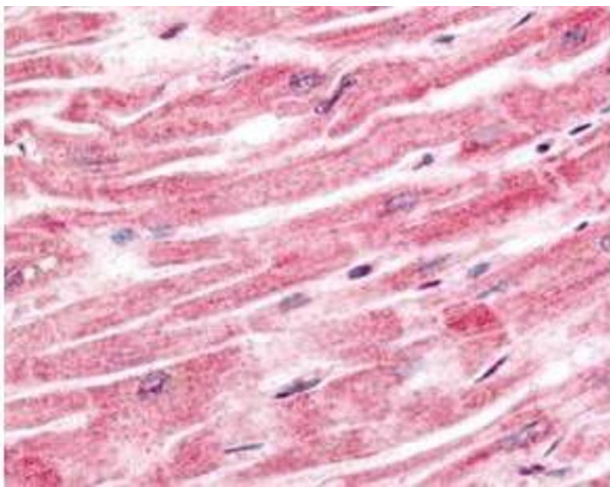
---

**Storage:** -20 °C



### Western Blotting

**Image 1.** Western Blot of Rabbit anti-Sprouty-4 antibody. Lane 1: HeLa. Lane 2: SW13. Lane 3: C2C12. Load: 30 µg per lane. Primary antibody: Sprouty 4 antibody at 1:100 for overnight at 4°C. Secondary antibody: rabbit secondary antibody at 1:5,000 for 45 min at RT. Block: 5% BLOTTO overnight at 4°C. Predicted/Observed size: a doublet band ~35 kDa corresponding to human Sprouty-4. Other band(s): none.



### Immunohistochemistry

**Image 2.** Immunohistochemistry of Rabbit anti-Sprouty-4 antibody. Tissue: human heart tissue. Fixation: formalin fixed paraffin embedded. Antigen retrieval: not required. Primary antibody: Sprouty-4 antibody at 2.5 µg/ml for 1 h at RT. Secondary antibody: Peroxidase rabbit secondary antibody at 1:10,000 for 45 min at RT. Localization: Sprouty-4 is cytoplasmic. Staining: Sprouty-4 as precipitated red signal with hematoxylin purple nuclear counterstain.