



[Go to Product page](#)

Datasheet for ABIN129631  
**anti-DIA2 antibody (AA 1085-1101)**

1 Image

### Overview

Quantity:	100 µg
Target:	DIA2
Binding Specificity:	AA 1085-1101
Reactivity:	Human
Host:	Rabbit
Clonality:	Polyclonal
Conjugate:	This DIA2 antibody is un-conjugated
Application:	ELISA, Western Blotting (WB)

### Product Details

Immunogen:	This affinity purified antibody was prepared from whole rabbit serum produced by repeated immunizations with a synthetic peptide corresponding aa 1085-1101 of Human DIA-2.
Isotype:	IgG
Characteristics:	Concentration Definition: by UV absorbance at 280 nm

### Target Details

Target:	DIA2
Alternative Name:	DIA-2 ( <a href="#">DIA2 Products</a> )
Background:	DIA-2 (also called DIA drome, Dia2, DIAPH2, Diaphanous 2, Diaphanous related formin 2, Diaphorase 2, DRF2, POF and POF2) may play a role in the development and normal function of the ovaries. Mutations of this gene have been linked to premature ovarian failure. Alternative

## Target Details

---

splicing results in two protein isoforms. Furthermore, each splice variant undergoes additional splicing in the 3' UTR. Overall 4 splice variants have been described. DIA-2 is expressed in testis, ovary, small intestine, prostate, lung, liver, kidney and leukocytes and can be found from E16 in ovary and testis and during P6-P16 during differentiation of ovarian follicles. Isoform 1 is referred to as DIA-156, whereas isoform 2 is called DIA-12C.

Synonyms: DIA-2, DIA drome, Dia2, DIAPH2, Diaphanous 2, Diaphanous related formin 2, Diaphorase 2, DRF2, POF and POF2

---

Gene ID: 1730, 5803003

---

UniProt: [O60879](#)

## Application Details

---

**Application Notes:** This affinity purified antibody has been tested for use in ELISA and by western blot. Specific conditions for reactivity should be optimized by the end user. Expect a band approximately 125 kDa in size corresponding to DIA-2 by western blotting in the appropriate cell lysate or extract. Alternate splice variants have been described for this protein. This antibody will only react with DIA-156 (isoform 1 of DIA-2).

---

**Restrictions:** For Research Use only

## Handling

---

**Format:** Liquid

---

**Concentration:** 1.4 mg/mL

---

**Buffer:** 0.02 M Potassium Phosphate, 0.15 M Sodium Chloride, pH 7.2

---

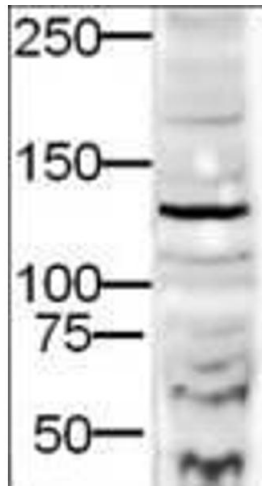
**Preservative:** Sodium azide

---

**Precaution of Use:** This product contains sodium azide: a POISONOUS AND HAZARDOUS SUBSTANCE which should be handled by trained staff only.

---

**Storage:** -20 °C



#### Western Blotting

**Image 1.** Western blot using Affinity Purified anti-DIA-2 antibody shows detection of a 132-kDa band corresponding to DIA-2 in a lysate prepared from human derived HEK293 cells. Approximately 20 ug of lysate was run on a SDS-PAGE and transferred onto nitrocellulose followed by reaction with a 1:500 dilution of anti-DIA-2 antibody. Detection occurred using a 1:5,000 dilution of HRP-labeled Goat anti-Rabbit IgG for 1 hour at room temperature. A chemiluminescence system was used for signal detection (Roche) using a 1 min exposure time.