



[Go to Product page](#)

Datasheet for ABIN129636
anti-APC1 antibody (pSer355)

1 Image

Overview

Quantity:	100 µg
Target:	APC1 (ANAPC1)
Binding Specificity:	AA 351-359, pSer355
Reactivity:	Human
Host:	Rabbit
Clonality:	Polyclonal
Conjugate:	This APC1 antibody is un-conjugated
Application:	ELISA, Western Blotting (WB)

Product Details

Immunogen:	This affinity purified antibody was prepared from whole rabbit serum produced by repeated immunizations with a synthetic peptide corresponding to amino acids 351-359 of Human Apc1 protein.
Isotype:	IgG
Cross-Reactivity:	Mouse (Murine), Dog (Canine), Rat (Rattus), Sheep (Ovine)
Characteristics:	Concentration Definition: by UV absorbance at 280 nm

Target Details

Target:	APC1 (ANAPC1)
Alternative Name:	APC1 (ANAPC1 Products)

Target Details

Background: APC1 (also known as Anaphase promoting complex subunit 1, Cyclosome subunit 1, Protein Tsg24, Mitotic checkpoint regulator and ANAPC1) is 1 of at least 11 subunits of the anaphase-promoting complex (APC), which functions at the metaphase-to-anaphase transition of the cell cycle and is regulated by spindle checkpoint proteins. The APC is an E3 ubiquitin ligase that targets cell cycle regulatory proteins for degradation by the proteasome, thereby allowing progression through the cell cycle.

Synonyms: Anaphase-promoting complex subunit 1 APC1 Cyclosome subunit 1 Testis-specific gene 24 protein Mitotic checkpoint regulator

Gene ID: 64682, 12056971

UniProt: [Q9H1A4](#)

Application Details

Application Notes: This affinity purified antibody has been tested for use in ELISA and western blot. Specific conditions for reactivity should be optimized by the end user. Expect a band ~ 215 kDa in size corresponding to APC1 by western blotting in the appropriate cell lysate or extract.

Restrictions: For Research Use only

Handling

Format: Liquid

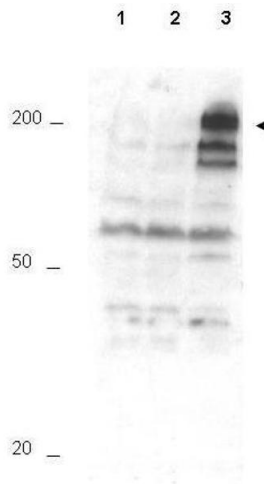
Concentration: 1.0 mg/mL

Buffer: 0.02 M Potassium Phosphate, 0.15 M Sodium Chloride, pH 7.2

Preservative: Sodium azide

Precaution of Use: This product contains sodium azide: a POISONOUS AND HAZARDOUS SUBSTANCE which should be handled by trained staff only.

Storage: -20 °C



Western Blotting

Image 1. Western blot using Affinity Purified anti-APC1 pS355 antibody shows detection of a band ~215 kDa corresponding to phosphorylated human APC1 (arrowhead). Lane 1 shows lysate from asynchronous cells. Lane 2 shows lysate from cells treated with thymidine to synchronize cells at the G1/S boundary. Lane 3 shows lysate from cells treated with nocodazole to synchronize cells at the M phase. Phosphorylated APC1 is mostly present only in cell preparations arrested at cell division. Each lane contains approximately 30 µg of HeLa S3 whole cell lysates separated by 12.5% SDS-PAGE followed by transfer to nitrocellulose. After blocking with 5% non-fat dry milk in TTBS, the membrane was probed with the primary antibody diluted to 1:500 for 1 h at room temperature followed by washes and reaction with a 1:5,000 dilution of HRP Gt-a-Rabbit IgG [H&L] MX for 45 min at room temperature. ECL reagent was used for detection. Other detection systems will yield similar results. Data contributed by Bing Li, UT Southwestern.