

Datasheet for ABIN129638  
**anti-DLL1 antibody (AA 155-173)**[Go to Product page](#)

3 Images

2 Publications

## Overview

Quantity:	100 µg
Target:	DLL1
Binding Specificity:	AA 155-173
Reactivity:	Mouse
Host:	Rabbit
Clonality:	Polyclonal
Conjugate:	This DLL1 antibody is un-conjugated
Application:	Western Blotting (WB), ELISA

## Product Details

Immunogen:	This affinity purified antibody was prepared from whole rabbit serum produced by repeated immunizations with a synthetic peptide corresponding to amino acids 155-173 of Mouse DELTA-1. DELTA-1 is a mouse homolog of the Notch Delta ligand and is a member of the delta/serrate/jagged family. It plays a role in mediating cell fate decisions during hematopoiesis. It may play a role in cell-to-cell communication. Swiss Prot accession Q61483. Expected to cross-react with rat, human and chicken.
Isotype:	IgG
Cross-Reactivity:	Rat (Rattus), Human, Chicken
Characteristics:	Concentration Definition: by UV absorbance at 280 nm

## Target Details

Target:	DLL1
Alternative Name:	DELTA-1 ( <a href="#">DLL1 Products</a> )
Background:	<p>Delta-like protein 1 is a protein that in humans is encoded by the DLL1 gene. The Notch signaling pathway has pleiotropic functions during mammalian embryogenesis. It is required for the patterning and differentiation of the presomitic and somitic paraxial mesoderm and of the neural tube. DLL1 is a human homolog of the Notch Delta ligand and is a member of the delta/serrate/jagged family. It plays a role in mediating cell fate decisions during hematopoiesis, and has been shown to have a role in cell-to-cell communication. Anti-Delta-like protein 1 antibody would be suitable for researchers in Cell Biology and Signal Transduction.</p> <p>Synonyms: Delta-like protein 1 antibody, Drosophila Delta homolog 1 antibody</p>
Gene ID:	13388
UniProt:	<a href="#">Q61483</a>
Pathways:	<a href="#">Notch Signaling</a> , <a href="#">Stem Cell Maintenance</a>

## Application Details

Application Notes:	Anti-DELTA-1 Antibody has been tested for use in ELISA against the immunizing peptide. It is expected that anti-Delta-1 antibody will be reactive in western blot assays. Reactivity in other immunoassays is unknown.
Restrictions:	For Research Use only

## Handling

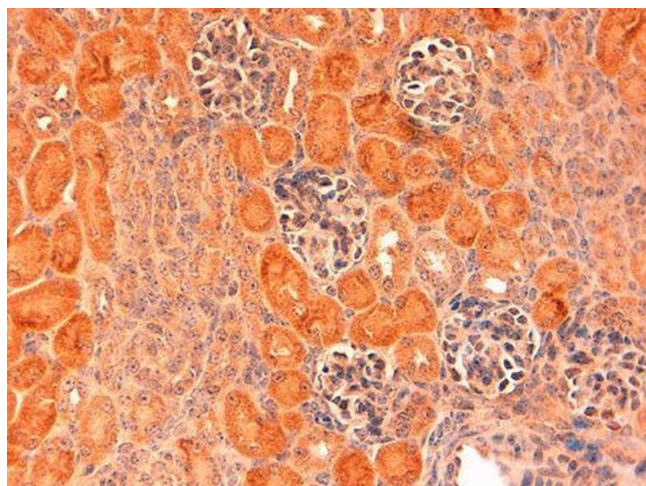
Format:	Liquid
Concentration:	1.0 mg/mL
Buffer:	0.02 M Potassium Phosphate, 0.15 M Sodium Chloride, pH 7.2
Preservative:	Sodium azide
Precaution of Use:	This product contains sodium azide: a POISONOUS AND HAZARDOUS SUBSTANCE which should be handled by trained staff only.
Storage:	-20 °C

## Publications

Product cited in:	Maloverjan, Piirsoo, Kasak, Peil, Østerlund, Kogerman: "Dual function of UNC-51-like kinase 3
-------------------	---

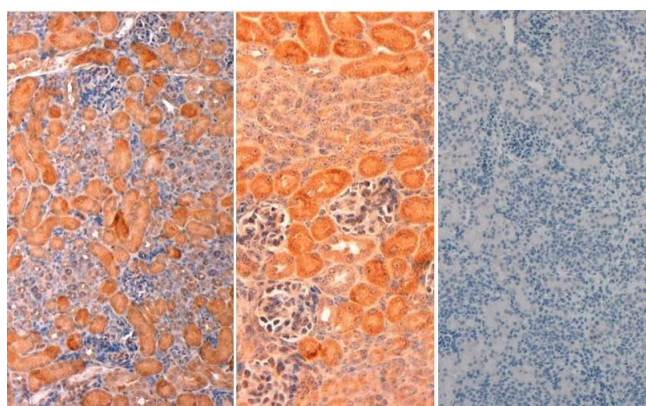
(Ulk3) in the Sonic hedgehog signaling pathway." in: **The Journal of biological chemistry**, Vol. 285, Issue 39, pp. 30079-90, (2010) ([PubMed](#)).

## Images



### Immunohistochemistry

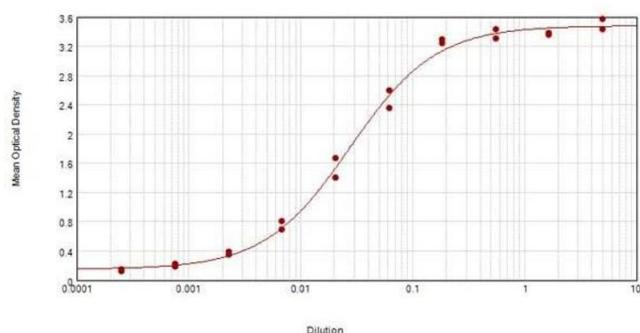
**Image 1.** Immunohistochemistry of Rabbit Anti-Delta1 antibody. Tissue: Mouse embryonic kidney Fixation: formalin fixed paraffin embedded 10% conc Antigen retrieval: pH 9.5 Primary antibody: 2ug/ml 1.5 hour @ room T Secondary antibody: Peroxidase secondary reagent for 45 min at RT. Localization: as shown Staining: 3,3'-diaminobenzidine tetrahydrochloride was used as the chromogen. Nuclei were counterstained purple with hematoxylin.



### Immunohistochemistry

**Image 2.** Immunohistochemistry of Rabbit anti-mouse DELTA1 Antibody in Mouse Embryonic Kidney Tissue: Mouse Embryonic Kidney Fixation: FFPE buffered formalin 10% conc Ag Retrieval: Heat, Citrate pH 6.2. Pressure Cooker (left, right), EDTA pH 9.5 Pressure Cooker (middle) Primary antibody: 2ug/ml 1.5 hour @ room T Secondary Ab: MACH 1 HRP POLYMER 1:50 45" RT

### Anti-Mouse DELTA-1-Specificity



### ELISA

**Image 3.** ELISA results of purified Rabbit anti-Mouse DELTA-1 Antibody tested against BSA-conjugated peptide of immunizing peptide. Each well was coated in duplicate with 0.1µg of conjugate. The starting dilution of antibody was 5µg/ml and the X-axis represents the Log10 of a 3-fold dilution. This titration is a 4-parameter curve fit where the IC50 is defined as the titer of the antibody. Assay performed using 3% fish gel, Goat anti-Rabbit IgG Antibody Peroxidase

Conjugated (Min X Bv Ch Gt GP Ham Hs Hu Ms Rt & Sh  
Serum Proteins) and TMB ELISA Peroxidase Substrate .