

Datasheet for ABIN129649
anti-CDC16 antibody (pThr580)[Go to Product page](#)

1 Image

Overview

Quantity:	100 µg
Target:	CDC16
Binding Specificity:	AA 575-588, pThr580
Reactivity:	Human
Host:	Rabbit
Clonality:	Polyclonal
Conjugate:	This CDC16 antibody is un-conjugated
Application:	Western Blotting (WB), ELISA

Product Details

Immunogen:	This affinity purified antibody was prepared from whole rabbit serum produced by repeated immunizations with a synthetic peptide corresponding to amino acids 575-588 of Human Apc6 protein.
Isotype:	IgG
Characteristics:	Concentration Definition: by UV absorbance at 280 nm

Target Details

Target:	CDC16
Alternative Name:	APC6 (CDC16 Products)
Background:	APC6 (also known as Cell division cycle protein 16 homolog (CDC16Hs), anaphase promoting complex subunit 6, and cyclosome subunit 6) is a component of the anaphase promoting

Target Details

complex/cyclosome (APC/C), a cell cycle-regulated ubiquitin ligase that controls progression through mitosis and the G₁ phase of the cell cycle. The APC/C is composed of at least 11 subunits. APC6 interacts with PPP5C and CDC20. This protein colocalizes with CDC27 to the centrosome at all stages of the cell cycle and to the mitotic spindle. Splice variants have been described for this protein.

Synonyms: Anaphase promoting complex subunit 6 antibody, CDC16Hs antibody, Cell division cycle 16 homolog antibody, Cell division cycle protein 16 homolog antibody, Cyclosome subunit 6 antibody

Gene ID: 8881, 37537763

UniProt: [Q13042](#)

Pathways: [Regulation of Actin Filament Polymerization](#)

Application Details

Application Notes: This affinity purified antibody has been tested for use in ELISA and western blot. Specific conditions for reactivity should be optimized by the end user. Expect a band ~ 72 kDa, 71.5 kDa or 65.9 kDa in size corresponding to isoforms of APC6 by western blotting in the appropriate cell lysate or extract.

Restrictions: For Research Use only

Handling

Format: Liquid

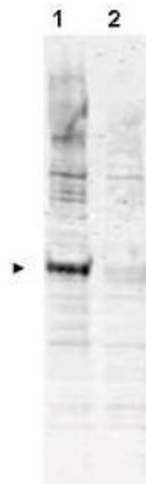
Concentration: 0.97 mg/mL

Buffer: 0.02 M Potassium Phosphate, 0.15 M Sodium Chloride, pH 7.2

Preservative: Sodium azide

Precaution of Use: This product contains sodium azide: a POISONOUS AND HAZARDOUS SUBSTANCE which should be handled by trained staff only.

Storage: -20 °C



Western Blotting

Image 1. Western blot using Affinity Purified anti-APC6 pT580 antibody shows detection of a band ~72 kDa corresponding to phosphorylated human APC6 (arrowhead lane 1). Lane 1 - nocodazole treated HeLa whole cell lysate. Lane 2 - Reactivity is not seen in lysates from asynchronous HeLa whole cell cultures. Each lane contains approximately 35ug of lysates, separated by 4-20% SDS-PAGE Tris-HEPES and then transferred to nitrocellulose. After blocking the membrane was probed with the primary antibody diluted to 1:1,000 overnight at 4°C followed by washes and reaction with a 1:10,000 dilution of 800 conjugated Gt-a-Rabbit IgG [H&L] MX for 45 min at room temperature. 800 fluorescence image was captured using the Infrared Imaging System developed by LI-COR. IRDye is a trademark of LI-COR, Inc. Other detection systems will yield similar results.