



[Go to Product page](#)

Datasheet for ABIN129650
anti-APC1 antibody (pSer377)

1 Image

Overview

| | |
|----------------------|--|
| Quantity: | 100 µg |
| Target: | APC1 (ANAPC1) |
| Binding Specificity: | AA 373-382, pSer377 |
| Reactivity: | Human |
| Host: | Rabbit |
| Clonality: | Polyclonal |
| Conjugate: | This APC1 antibody is un-conjugated |
| Application: | ELISA, Immunohistochemistry (IHC), Western Blotting (WB) |

Product Details

| | |
|------------------|--|
| Immunogen: | This affinity purified antibody was prepared from whole rabbit serum produced by repeated immunizations with a synthetic peptide corresponding to amino acids 373-382 of Human Apc1 protein. |
| Isotype: | IgG |
| Characteristics: | Concentration Definition: by UV absorbance at 280 nm |

Target Details

| | |
|-------------------|--|
| Target: | APC1 (ANAPC1) |
| Alternative Name: | APC1 (ANAPC1 Products) |
| Background: | APC1 (also known as Anaphase promoting complex subunit 1, Cyclosome subunit 1, Protein Tsg24, Mitotic checkpoint regulator and ANAPC1) is 1 of at least 11 subunits of the anaphase- |

Target Details

promoting complex (APC), which functions at the metaphase-to-anaphase transition of the cell cycle and is regulated by spindle checkpoint proteins. The APC is an E3 ubiquitin ligase that targets cell cycle regulatory proteins for degradation by the proteasome, thereby allowing progression through the cell cycle.

Synonyms: ANAPC1 antibody, Anaphase promoting complex subunit 1 antibody, Cyclosome subunit 1 antibody, MCPR antibody, Meiotic checkpoint regulator antibody

Gene ID: 64682, 12056971

UniProt: [Q9H1A4](#)

Application Details

Application Notes: This affinity purified antibody has been tested for use in ELISA, immunohistochemistry and western blot. Specific conditions for reactivity should be optimized by the end user. Expect a band ~ 215 kDa in size corresponding to APC1 by western blotting in the appropriate cell lysate or extract.

Restrictions: For Research Use only

Handling

Format: Liquid

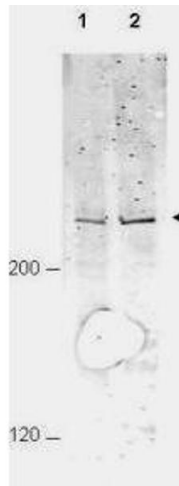
Concentration: 0.21 mg/mL

Buffer: 0.02 M Potassium Phosphate, 0.15 M Sodium Chloride, pH 7.2

Preservative: Sodium azide

Precaution of Use: This product contains sodium azide: a POISONOUS AND HAZARDOUS SUBSTANCE which should be handled by trained staff only.

Storage: -20 °C



Western Blotting

Image 1. Western blot using Affinity Purified anti-APC1 pS377 antibody shows detection of a band ~215 kDa corresponding to phosphorylated human APC1 (arrowhead). Lane 1 shows lysate from asynchronous cells. Lane 2 shows lysate from cells treated with nocodazole. While some phosphorylated APC1 is present in untreated cell, the amount of phosphorylated protein is increased in cell preparations arrested in mitosis. Each lane contains approximately 30 ug of HeLa whole cell lysates, separated by 4-8% SDS-PAGE followed by transfer to nitrocellulose. After blocking the membrane was probed with the primary antibody diluted to 1:1,000 overnight at 4°C followed by washes and reaction with a 1:10,000 dilution of IRDye800 conjugated Gt-a-Rabbit IgG [H&L] MX for 45 min at room temperature. IRDye800 fluorescence image was captured using the Infrared Imaging System developed by LI-COR. IRDye is a trademark of LI-COR, Inc. Other detection systems will yield similar results.