

Datasheet for ABIN129655
anti-SLIT3 antibody (AA 1164-1177)[Go to Product page](#)

1 Image

Overview

Quantity:	100 µg
Target:	SLIT3
Binding Specificity:	AA 1164-1177
Reactivity:	Human
Host:	Rabbit
Clonality:	Polyclonal
Conjugate:	This SLIT3 antibody is un-conjugated
Application:	Western Blotting (WB), ELISA

Product Details

Immunogen:	This affinity purified antibody was prepared from whole rabbit serum produced by repeated immunizations with a synthetic peptide corresponding aa 1164-1177 of Human SLIT-3 protein.
Isotype:	IgG
Cross-Reactivity:	Rat (Rattus), Dog (Canine), Sheep (Ovine), Mouse (Murine)

Target Details

Target:	SLIT3
Alternative Name:	SLIT-3 (SLIT3 Products)
Background:	SLIT-3 (also known as multiple epidermal growth factor-like domain 5 and Slit homolog 3 protein) is a Slit protein. The 'slit' gene has been shown to play a critical role in central nervous system midline formation. In addition to SLIT3 there are two additional human 'slit' homologs,

Target Details

which are termed SLIT1 and SLIT2. Each SLIT gene encodes a putative secreted protein, which contains conserved protein-protein interaction domains including leucine-rich repeats and epidermal growth factor-like motifs, similar to those of the Drosophila protein. SLIT proteins may also participate in the formation and maintenance of the nervous and endocrine systems by protein-protein interactions. Slit-3 is a secreted protein predominantly expressed in thyroid. Multiple isoforms have been reported for this product.

Synonyms: FLJ10764 antibody, KIAA0814 antibody, MEGF 5 antibody, MEGF5 antibody, Multiple epidermal growth factor-like domains 5 antibody, SLIL 2 antibody

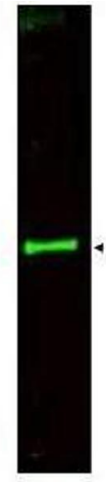
Gene ID:	6586, 11321571
UniProt:	O75094
Pathways:	Regulation of Cell Size

Application Details

Application Notes:	This affinity purified antibody has been tested for use in ELISA and by western blot. Specific conditions for reactivity should be optimized by the end user. Expect a band at ~ 168 kDa corresponding to full length protein as well as multiple bands corresponding to isoforms of SLIT-3 by western blotting in the appropriate cell lysate or extract.
Restrictions:	For Research Use only

Handling

Format:	Liquid
Buffer:	0.02 M Potassium Phosphate, 0.15 M Sodium Chloride, pH 7.2
Preservative:	Sodium azide
Precaution of Use:	This product contains sodium azide: a POISONOUS AND HAZARDOUS SUBSTANCE which should be handled by trained staff only.
Storage:	-20 °C



Western Blotting

Image 1. Western blot using Affinity Purified anti-SLIT-3 antibody shows detection of a predominant band at ~145 kDa corresponding to SLIT-3 (arrowhead) in a bovine thyroid whole cell lysate using the 800 nm channel (green). ~ 35 ug of lysate was separated on a 4-8% Tricine gel by SDS-PAGE and transferred onto nitrocellulose. After blocking the membrane was probed with the primary antibody diluted to 1:800. Incubation was for 2 h at room temperature followed by washes and reaction with a 1:10,000 dilution of 800 conjugated Gt-a-Rabbit IgG [H&L] MXHu for 45 min at room temperature. Molecular weight markers were used for size comparison using the 700 nm channel (not shown). IRDye800 fluorescence image was captured using the Infrared Imaging System developed by LI-COR. IRDye is a trademark of LI-COR, Inc. Other detection systems will yield similar results.