

Datasheet for ABIN129656
anti-CDC27 antibody (pThr244)[Go to Product page](#)

1 Image

Overview

Quantity:	100 µg
Target:	CDC27
Binding Specificity:	AA 239-249, pThr244
Reactivity:	Human
Host:	Rabbit
Clonality:	Polyclonal
Conjugate:	This CDC27 antibody is un-conjugated
Application:	Western Blotting (WB), ELISA

Product Details

Immunogen:	This affinity purified antibody was prepared from whole rabbit serum produced by repeated immunizations with a synthetic peptide corresponding aa 239-249 of Human CDC27.
Isotype:	IgG
Characteristics:	Concentration Definition: by UV absorbance at 280 nm

Target Details

Target:	CDC27
Alternative Name:	CDC27 (CDC27 Products)
Background:	Human CDC27 (also called Cell division cycle protein 27 homolog, CDC27Hs and H-NUC) shares strong similarity with Saccharomyces cerevisiae protein Cdc27. This protein is a component of anaphase-promoting complex (APC), which is composed of eight protein

Target Details

subunits and highly conserved in eukaryotic cells. APC catalyzes the formation of a cyclin B-ubiquitin conjugate that is responsible for the ubiquitin-mediated proteolysis of B-type cyclins. This protein and 3 other members of the APC complex contain the TPR (tetratricopeptide repeat), a protein domain important for protein-protein interaction. This protein was shown to interact with mitotic checkpoint proteins including Mad2, p55CDC and BUBR1, and thus may be involved in controlling the timing of mitosis.

Synonyms: Cell division cycle protein 27 homolog CDC27Hs H-NUC

Gene ID: 996, 167466175

UniProt: [P30260](#)

Application Details

Application Notes: This affinity purified antibody has been tested for use in ELISA and by western blot. Specific conditions for reactivity should be optimized by the end user. Expect a band approximately 92 kDa in size corresponding to CDC27 by western blotting in the appropriate cell lysate or extract. Less than 1% reactivity is observed against the non-phosphorylated form of the immunizing peptide. This antibody is phospho specific for pT244 of CDC27.

Restrictions: For Research Use only

Handling

Format: Liquid

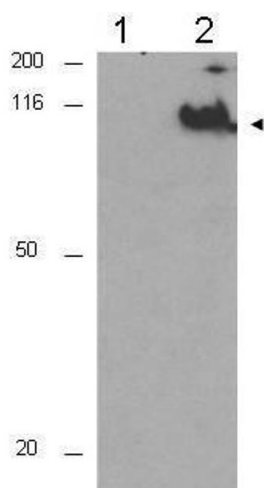
Concentration: 1.0 mg/mL

Buffer: 0.02 M Potassium Phosphate, 0.15 M Sodium Chloride, pH 7.2

Preservative: Sodium azide

Precaution of Use: This product contains sodium azide: a POISONOUS AND HAZARDOUS SUBSTANCE which should be handled by trained staff only.

Storage: -20 °C



Western Blotting

Image 1. Western blot using Affinity Purified anti-CDC27 pT244 antibody shows detection of a band ~92 kDa corresponding to phosphorylated human CDC27 (arrowhead). Lane 1 shows lysate from asynchronous cells. Lane 2 shows lysate from cells treated with nocodazole. Phosphorylated CDC27 is mostly present only in cell preparations arrested in mitosis. Each lane contains approximately 30 µg of HeLa whole cell lysates separated by 12.5% SDS-PAGE followed by transfer to nitrocellulose. After blocking with 5% non-fat dry milk in TTBS, the membrane was probed with the primary antibody diluted to 1:500 for 1 h at room temperature followed by washes and reaction with a 1:5,000 dilution of HRP Gt-a-Rabbit IgG [H&L] MX for 45 min at room temperature. ECL reagent was used for detection. Other detection systems will yield similar results. Data contributed by Bing Li, UT Southwestern.