

Datasheet for ABIN129660
anti-GGA3 antibody (AA 400-415)

3 Images

[Go to Product page](#)

Overview

Quantity:	100 µg
Target:	GGA3
Binding Specificity:	AA 400-415
Reactivity:	Human
Host:	Rabbit
Clonality:	Polyclonal
Conjugate:	This GGA3 antibody is un-conjugated
Application:	ELISA, Western Blotting (WB)

Product Details

Immunogen:	This affinity-purified antibody was prepared from whole rabbit serum produced by repeated immunizations with a synthetic peptide corresponding to amino acids 400-415 of Human GGA3.
Isotype:	IgG
Cross-Reactivity:	Chimpanzee
Characteristics:	Concentration Definition: by UV absorbance at 280 nm

Target Details

Target:	GGA3
Alternative Name:	GGA3 (GGA3 Products)

Target Details

Background: GGA3 (also known as ADP-ribosylation factor binding protein GGA3, Golgi-localized, gamma ear-containing, ARF-binding protein 3, Gamma-adaptin related protein 3) plays a role in protein sorting and trafficking between the trans-Golgi network (TGN) and endosomes. This protein mediates the ARF-dependent recruitment of clathrin to the TGN and binds ubiquitinated proteins and membrane cargo molecules with a cytosolic acidic cluster-dileucine (AC-LL) motif. GGA1 is a monomeric protein that interacts with SORT1, SORL1, LRP3, GGA binding partner (GGABP) and P200, GGA1 and GGA2 as well as RABEP1, RABGEF1 and type-I membrane proteins M6PR/CD-MPR, IGF2R/CI-MPR and BACE1. GGA3 is a ubiquitously expressed membrane-associated protein that is localized to TGN and endosomes. Multiple alternatively spliced transcript variants encoding different isoforms have been found for this gene. Synonyms: ADP-ribosylation factor-binding protein GGA3 Golgi-localized, gamma ear-containing, ARF-binding protein 3 GGA3 Synonyms: KIAA0154

Gene ID: 23163, 20336267

UniProt: [Q9NZ52](#)

Application Details

Application Notes: This affinity purified antibody has been tested for use in ELISA and western blot. Specific conditions for reactivity should be optimized by the end user. Expect bands at 78 kDa in size corresponding to GGA3 by western blotting in the appropriate cell lysate or extract.

Restrictions: For Research Use only

Handling

Format: Liquid

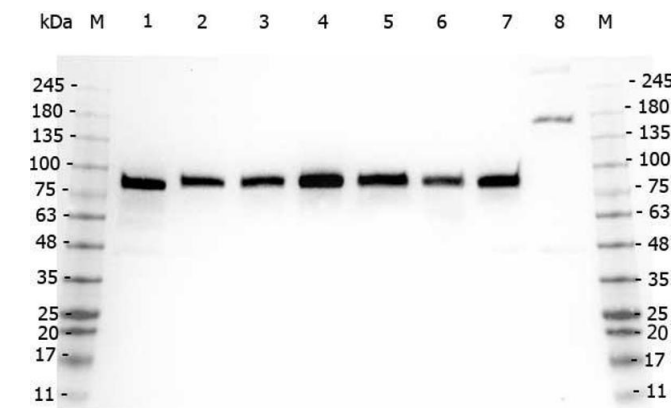
Concentration: 0.48 mg/mL

Buffer: 0.02 M Potassium Phosphate, 0.15 M Sodium Chloride, pH 7.2

Preservative: Sodium azide

Precaution of Use: This product contains sodium azide: a POISONOUS AND HAZARDOUS SUBSTANCE which should be handled by trained staff only.

Storage: -20 °C



Western Blotting

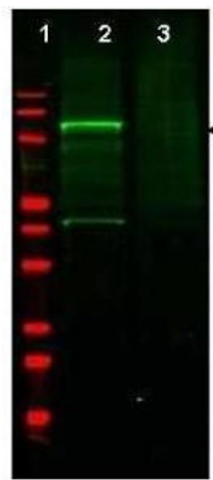
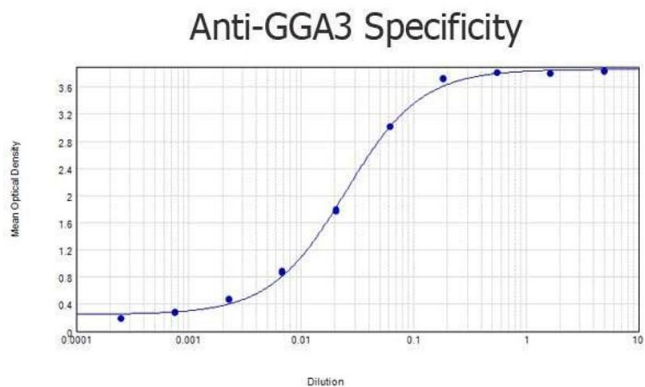
Image 1. Western Blot of Rabbit anti-GGA3 antibody. Marker: Opal Pre-stained ladder . Lane 1: HEK293 lysate . Lane 2: HeLa Lysate . Lane 3: MCF-7 Lysate . Lane 4: Jurkat Lysate . Lane 5: A431 Lysate . Lane 6: LNCaP Lysate . Lane 7: A-172 Lysate . Lane 8: NIH/3T3 Lysate . Load: 35 µg per lane. Primary antibody: GGA3 antibody at 1:5,000 for overnight at 4°C. Secondary antibody: Peroxidase rabbit secondary antibody at 1:30,000 for 60 min at RT. Blocking Buffer: 1% Casein-TTBS for 30 min at RT. Predicted/Observed size: 78 kDa for GGA3.

ELISA

Image 2. ELISA results of purified Rabbit anti-GGA3 Antibody tested against BSA-conjugated peptide of immunizing peptide. Each well was coated in duplicate with 0.1µg of conjugate. The starting dilution of antibody was 5µg/ml and the X-axis represents the Log10 of a 3-fold dilution. This titration is a 4-parameter curve fit where the IC50 is defined as the titer of the antibody. Assay performed using 3% fish gel, Goat anti-Rabbit IgG Antibody Peroxidase Conjugated (Min X Bv Ch Gt GP Ham Hs Hu Ms Rt & Sh Serum Proteins) and TMB ELISA Peroxidase Substrate .

Western Blotting

Image 3. Western blot using Affinity Purified anti-GGA3 antibody shows detection of a band at ~110 kDa corresponding to GFP-GGA3 fusion protein present in a lysate of HEK293 cells over- expressing the recombinant protein (lane 2, arrowhead). Pre-incubation of antibody with immunizing peptide blocks specific staining (lane 3). MW markers are shown in lane 1 (700 nm channel - red). Approximately 35 µg of lysate was separated on a 16% Tricine gel by SDS-PAGE and transferred onto nitrocellulose. After blocking the membrane was probed with the primary



antibody diluted to 1:600. Reaction occurred overnight at 4° C followed by washes and reaction with a 1:10,000 dilution of IRDye800 conjugated Gt-a-Rabbit IgG [H&L] for 45 min at room temperature (800 nm channel - green). IRDye800 fluorescence image was captured using the Infrared Imaging System developed by LI-COR. IRDye is a trademark of LI-COR, Inc. Other detection systems will yield similar results.