

Datasheet for ABIN129673  
**anti-ANKRD26 antibody (AA 1-15)**[Go to Product page](#)

## 1 Image

## Overview

Quantity:	100 µg
Target:	ANKRD26
Binding Specificity:	AA 1-15
Reactivity:	Mouse
Host:	Rabbit
Clonality:	Polyclonal
Conjugate:	This ANKRD26 antibody is un-conjugated
Application:	ELISA, Western Blotting (WB)

## Product Details

Immunogen:	This affinity purified antibody was prepared from whole rabbit serum produced by repeated immunizations with a synthetic peptide corresponding to amino acids 1-15 of mouse Ankrd26 protein.
Isotype:	IgG
Characteristics:	Concentration Definition: by UV absorbance at 280 nm

## Target Details

Target:	ANKRD26
Alternative Name:	Ankrd26 ( <a href="#">ANKRD26 Products</a> )
Background:	This antibody is designed, produced, and is suitable for Cancer, Immunology and Nuclear Signaling research. POTE gene is expressed in prostate and breast cancer and a potential

## Target Details

candidate for immuno-therapy. It is also expressed in undifferentiated embryonic stem (ES) cells. ANKRD-26 is the ancestral gene of POTE and has a homologue in mouse. Mouse Ankrd26 is also selectively expressed in ES cells and various cancers but not in other adult tissues. The encoded protein of Ankrd26 contains ankyrin repeats and coiled coil domain of spectrin suggestive of a signaling molecule.

Synonyms: Ankyrin repeat domain 26 antibody, Ankyrin repeat domaincontaining protein 26 antibody, bA145E8.1 antibody, KIAA1074 antibody

Gene ID: 232339, 28436723

UniProt: [Q811D2](#)

Pathways: [Feeding Behaviour](#)

## Application Details

Application Notes: This affinity purified antibody has been tested for use in ELISA and by western blot. Specific conditions for reactivity should be optimized by the end user. Expect a band approximately 81 kDa in size corresponding to Ankrd26 by western blotting in the appropriate mouse tissue.

Restrictions: For Research Use only

## Handling

Format: Liquid

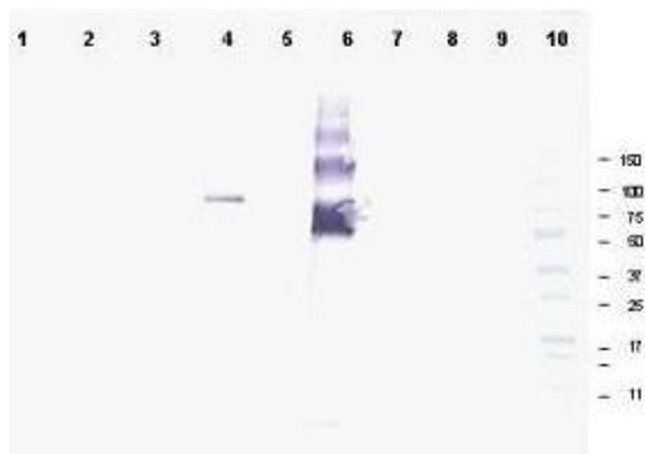
Concentration: 1.48 mg/mL

Buffer: 0.02 M Potassium Phosphate, 0.15 M Sodium Chloride, pH 7.2

Preservative: Sodium azide

Precaution of Use: This product contains sodium azide: a POISONOUS AND HAZARDOUS SUBSTANCE which should be handled by trained staff only.

Storage: -20 °C



### Western Blotting

**Image 1.** Western blot using affinity purified anti-Ankrd26 antibody shows detection of a band at ~81 kDa corresponding to mouse Ankrd26 protein. Lane 1 Blank, Lane 2 MES cell lysate - 80 µg, Lane 3 MES cell lysate - 40 µg, Lane 4 293T-ANKRD26 transfected cell lysate - 20 µg, Lane 5 control 293T cell lysate - 20 µg, Lane 6 BSA-ANKRD26 conjugate 20 ng, Lane 7 BSA - 500 ng, Lane 8 BSA - 100 ng, Lane 9 BSA 20 ng and Lane 10 Protein standards. Detection of endogenous Ankrd26 protein in MES cell lysates may occur when detection methods with higher sensitivity are used. Proteins were separated by SDS-PAGE, transferred to nitrocellulose, and probed with the primary antibody diluted to 1:1,000 followed by detection using ALP conjugated Gt-a-Rabbit IgG (611-105-122 is suggested) diluted to 1:3,000. Size estimation was made by comparison to prestained MW markers as indicated. Personal Communication. Ira Pastan, NIH, CCR, Bethesda, MD.