

Datasheet for ABIN129679  
**anti-MLF1 antibody (Thr78)**[Go to Product page](#)

## 1 Image

## Overview

Quantity:	100 µg
Target:	MLF1
Binding Specificity:	Thr78
Reactivity:	Human
Host:	Rabbit
Clonality:	Polyclonal
Conjugate:	This MLF1 antibody is un-conjugated
Application:	Western Blotting (WB), ELISA

## Product Details

Immunogen:	This affinity purified antibody was prepared from whole rabbit serum produced by repeated immunizations with a synthetic peptide corresponding to amino acids surrounding of human MLF1IP protein.
Isotype:	IgG
Cross-Reactivity:	Dog (Canine), Sheep (Ovine), Chimpanzee
Characteristics:	Concentration Definition: by UV absorbance at 280 nm

## Target Details

Target:	MLF1
Alternative Name:	MLF1 ( <a href="#">MLF1 Products</a> )

## Target Details

Background:	<p>This antibody is designed, produced, and is suitable for Cancer, Immunology and Nuclear Signaling research. Myeloid leukemia factor-1 (MLF1) Interacting Protein (also known as PBIP1, MLF1IP1, KLIP1 or KSHV latent nuclear antigen interacting protein 1) is a novel polo-like kinase 1 (Plk1) substrate. Plk1 phosphorylation of MLF1IP induces ubiquitination and degradation of MLF1IP prior to the metaphase/anaphase transition. Several Plk1-dependent phosphorylation sites have been identified on MLF1IP by mass spectrometry. Mutations of these sites stabilize MLF1IP and inhibit mitotic progression. Subsequent in vitro and in vivo MLF1IP phosphorylation and stability assays have revealed that phosphorylation of Thr78 is critical for triggering Plk1-dependent MLF1IP degradation. Expression of a non-degradable Thr78Ala mutant was sufficient to induce a mitotic block. Timely phosphorylation of MLF1IP on Thr78 by Plk1 is critical for eliminating the MLF1IP-imposed mitotic block prior to anaphase onset. MLF1IP is speculated to be a novel tumor suppressor, whose function is required for proper sister-chromatid separation. Loss of MLF1IP function may result in improper segregation of chromosomes and genomic instability, thus promoting tumorigenesis.</p> <p>Synonyms: FLJ23468 antibody, HHV8 LNAIP1 antibody, ICEN24 antibody, Kaposi Sarcoma Herpesvirus latent nuclear antigen interacting protein 1 antibody</p>
-------------	---

Gene ID:	79682, 38016935
----------	-----------------

UniProt:	<a href="#">Q71F23</a>
----------	------------------------

## Application Details

Application Notes:	This affinity purified antibody has been tested for use in ELISA and western blotting. Specific conditions for reactivity should be optimized by the end user. Expect a band approximately 65 kDa in size corresponding to MLF1IP protein by western blotting in the appropriate cell lysate or extract.
--------------------	--

Restrictions:	For Research Use only
---------------	-----------------------

## Handling

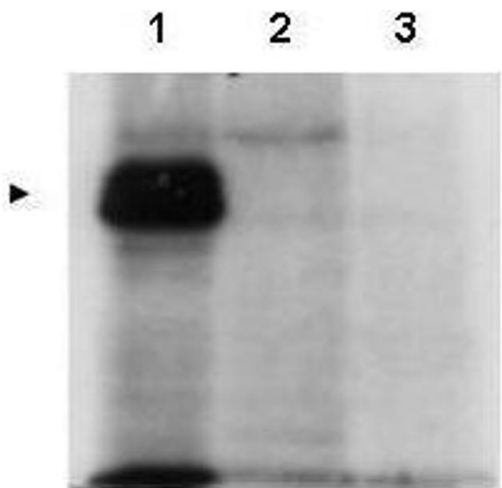
Format:	Liquid
Concentration:	1.06 mg/mL
Buffer:	0.02 M Potassium Phosphate, 0.15 M Sodium Chloride, pH 7.2
Preservative:	Sodium azide
Precaution of Use:	This product contains sodium azide: a POISONOUS AND HAZARDOUS SUBSTANCE which

Handling

should be handled by trained staff only.

Storage: -20 °C

Images



Western Blotting

**Image 1.** Western blot using affinity purified anti-MLF1IP antibody shows detection of MLF1IP (arrowhead) in HeLa cells transfected with ZZ-tagged MLF1IP (Lane 1). Lane 2 is lysate from non-transfected HeLa cells, and Lane 3 is lysate from HeLa cells containing a knock-out mutation for PBIP1/MLF1IP. Personal Communication, Kyung S. Lee, CCR-NCI, Bethesda, MD.