

Datasheet for ABIN129689

anti-CRTC1 antibody (AA 19-34)[Go to Product page](#)**1** Image

Overview

Quantity:	100 µg
Target:	CRTC1
Binding Specificity:	AA 19-34
Reactivity:	Human
Host:	Rabbit
Clonality:	Polyclonal
Conjugate:	This CRTC1 antibody is un-conjugated
Application:	Western Blotting (WB), ELISA

Product Details

Immunogen:	This affinity purified antibody was prepared from whole rabbit serum produced by repeated immunizations with a synthetic peptide corresponding to amino acids 19-34 of human MECT1 protein.
Isotype:	IgG
Cross-Reactivity:	Mouse (Murine), Rat (Rattus), Zebrafish (Brachydanio rerio), Pufferfish, Sheep (Ovine)
Characteristics:	Concentration Definition: by UV absorbance at 280 nm

Target Details

Target:	CRTC1
Alternative Name:	MECT1 (CRTC1 Products)

Target Details

Background:	This antibody is designed, produced, and is suitable for Cancer, Immunology and Nuclear Signaling research. MECT1 (also known as MucoEpidermoid Carcinoma Translocated 1, Transducer of regulated cAMP response element-binding protein 1, TORC1, and Transducer of CREB protein 1) is a nuclear protein that functions as a transcriptional coactivator for CREB1, which activates transcription through both consensus and variant cAMP response element (CRE) sites. MECT1 does not appear to modulate CREB1 DNA-binding activity but Synonyms: CREB regulated transcription coactivator 1 antibody, CRTC1 antibody, KIAA0616 antibody, MECT 1 antibody, Mucoepidermoid carcinoma translocated protein 1 antibody
-------------	---

Gene ID:	23373, 148596965
----------	------------------

UniProt:	Q6UUV9
----------	------------------------

Application Details

Application Notes:	This affinity-purified antibody has been tested for use in ELISA and western blot. Specific conditions for reactivity should be optimized by the end user. Expect a band approximately 80-95 kDa in size corresponding to MECT1 protein by western blotting in the appropriate cell lysate or extract. This antibody will react with isoform 1 and 2 of MECT1.
--------------------	--

Restrictions:	For Research Use only
---------------	-----------------------

Handling

Format:	Liquid
---------	--------

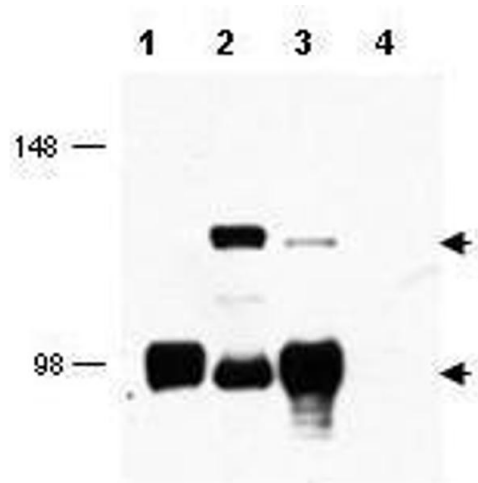
Concentration:	0.95 mg/mL
----------------	------------

Buffer:	0.02 M Potassium Phosphate, 0.15 M Sodium Chloride, pH 7.2
---------	--

Preservative:	Sodium azide
---------------	--------------

Precaution of Use:	This product contains sodium azide: a POISONOUS AND HAZARDOUS SUBSTANCE which should be handled by trained staff only.
--------------------	--

Storage:	-20 °C
----------	--------



Western Blotting

Image 1. Western blot using affinity purified anti-MECT1 antibody shows detection of endogenous MECT1 (lower arrowhead) and MECT1-MAML2 fusion protein (top arrowhead) in cell lysates. Lane 1 contains lysate from cells expressing MECT1 only. Lane 2 contains lysate from cells transfected with fusion protein. Lane 3 contains lysate from cells strongly expressing MECT1 and weakly expressing the fusion protein. Lane 4 contains lysate from control cells. After SDS-PAGE and transfer, the membrane was probed with the primary antibody diluted to 1:1,000. Personal Communication, Frederick Kaye, CCR-NCI, Bethesda, MD.