

Datasheet for ABIN129698
anti-ABCB6 antibody (AA 440-455)[Go to Product page](#)

1 Image

2 Publications

Overview

Quantity:	100 µg
Target:	ABCB6
Binding Specificity:	AA 440-455
Reactivity:	Human
Host:	Rabbit
Clonality:	Polyclonal
Conjugate:	This ABCB6 antibody is un-conjugated
Application:	Western Blotting (WB), ELISA

Product Details

Immunogen:	This affinity purified antibody was prepared from whole rabbit serum produced by repeated immunizations with a synthetic peptide corresponding to amino acids 440-455 of human ABCB6 protein.
Isotype:	IgG
Cross-Reactivity:	Dog (Canine)
Characteristics:	Concentration Definition: by UV absorbance at 280 nm

Target Details

Target:	ABCB6
Alternative Name:	ABCB6 (ABCB6 Products)

Target Details

Background:	<p>This antibody is designed, produced, and is suitable for Cancer, Immunology and Nuclear Signaling research. ABCB6 (ATP-binding cassette sub-family B member 6, also known as mitochondrial precursor ABC transporter 3, Mt-ABC transporter 3, and ABC transporter umat) is a member of the superfamily of ATP-binding cassette (ABC) transporters. ABCB6 is a membrane-associated protein that transports various molecules across the extra- and intra-cellular membranes. ABC genes are divided into seven distinct subfamilies (ABC1, DR/TAP, MRP, ALD, OABP, GCN20, White). This protein is a member of the MDR/TAP subfamily. Members of the MDR/TAP subfamily confer multi-drug resistance (MDR) to cancer cells and are also involved in antigen presentation. ABCB6 also likely plays a role in mitochondrial function. Localized to 2q26, this gene is considered a candidate gene for lethal neonatal metabolic syndrome, a disorder of mitochondrial function.</p> <p>Synonyms: ABC antibody, ABC transporter umat antibody, ABC14 antibody, ATP binding cassette sub family B member 6, mitochondrial precursor antibody</p>
Gene ID:	10058, 13123949
UniProt:	Q9NP58
Pathways:	Transition Metal Ion Homeostasis

Application Details

Application Notes:	This affinity-purified antibody has been tested for use in ELISA and western blot. Specific conditions for reactivity should be optimized by the end user. Expect a band approximately 94 kDa in size corresponding to ABCB6 protein by western blotting in the appropriate cell lysate or extract.
Restrictions:	For Research Use only

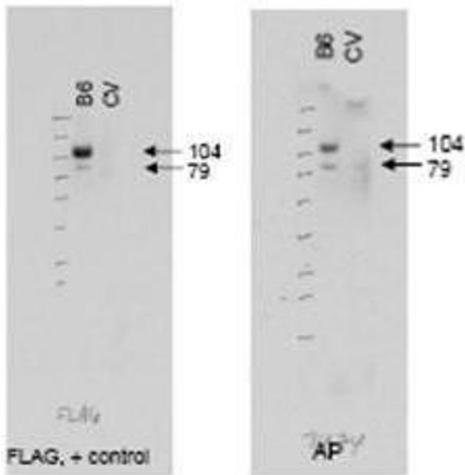
Handling

Format:	Liquid
Concentration:	1.0 mg/ml
Buffer:	0.02 M Potassium Phosphate, 0.15 M Sodium Chloride, pH 7.2
Preservative:	Sodium azide
Precaution of Use:	This product contains sodium azide: a POISONOUS AND HAZARDOUS SUBSTANCE which should be handled by trained staff only.
Storage:	-20 °C

Publications

Product cited in: Balmus, Karp, Ng, Jackson, Adams, McIntyre: "A high-throughput in vivo micronucleus assay for genome instability screening in mice." in: **Nature protocols**, Vol. 10, Issue 1, pp. 205-15, (2015) ([PubMed](#)).

Images



Western Blotting

Image 1. Western blot using affinity purified anti-ABCB6 antibody (right panel, lane B6) shows detection of Flag tagged human ABCB6 protein at 104 kDa and a truncated form of the protein at 79 kDa (arrowheads). The antibody successfully detected ABCB6 in KB cells transfected with the ABCB6 protein. A lysate prepared from KB cells without a vector insert (CV lane) should no reactivity with the antibody. The left panel shows a similar staining pattern using an anti-Flag™ antibody as a positive control. The membrane was probed with the primary antibody diluted to 1:1,400. Personal Communication, Jill Paterson, CCR-NCI, Bethesda, MD.