



Datasheet for ABIN129725
anti-RFP antibody (HRP)



[Go to Product page](#)

1 Image

1 Publication

Overview

Quantity:	100 µg
Target:	RFP
Reactivity:	Discosoma
Host:	Rabbit
Clonality:	Polyclonal
Conjugate:	This RFP antibody is conjugated to HRP
Application:	Western Blotting (WB), ELISA, Immunofluorescence (IF)

Product Details

Immunogen:	The immunogen is a Red Fluorescent Protein (RFP) fusion protein corresponding to the full length amino acid sequence derived from the mushroom polyp coral Discosoma. Immunogen type: Recombinant
Isotype:	IgG

Target Details

Target:	RFP
Alternative Name:	RFP (RFP Products)
Background:	Antibodies to RFP (Discosoma spp.) are intended for use in immunological assays including ELISA, western blotting, fluorometry and fluorescence activated cell sorting (FACS). Synonyms: HRP, DsRed, rDsRed, Discosoma sp. Red Fluorescent Protein, Red fluorescent protein drFP583

Application Details

Application Notes: Polyclonal anti-RFP is designed to detect RFP and its variants. This antibody can be used to detect RFP by ELISA (sandwich or capture) for the direct binding of antigen. Biotin conjugated polyclonal anti-RFP used in a sandwich ELISA with unconjugated anti-RFP is well suited to titrate RFP in solution. The detection antibody conjugated to biotin is subsequently reacted with streptavidin conjugated HRP Fluorochrome conjugated polyclonal anti-RFP can be used to detect RFP by immunofluorescence microscopy in cell expression systems and can detect RFP containing inserts. Significant amplification of signal is achieved using fluorochrome conjugated polyclonal anti-RFP relative to the fluorescence of RFP alone. For immunoblotting use either alkaline phosphatase or peroxidase conjugated polyclonal anti-RFP to detect RFP or RFP containing proteins on western blots. Optimal titers for applications should be determined by the researcher.

Restrictions: For Research Use only

Handling

Format: Lyophilized

Reconstitution: Restore with deionized water (or equivalent)

Concentration: 1.0 mg/mL

Buffer: 0.02 M Potassium Phosphate, 0.15 M Sodium Chloride, pH 7.2

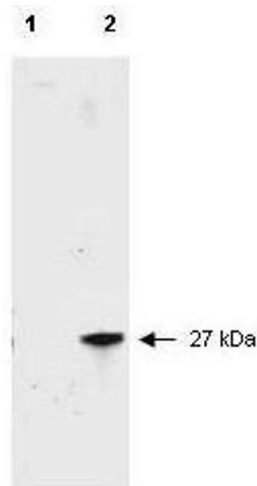
Preservative: Gentamicin sulfate

Handling Advice: Do NOT add Sodium Azide!

Storage: 4 °C

Publications

Product cited in: Saravanan, Sareen, Abu-El-Rub, Ashour, Sequiera, Ammar, Gopinath, Shamaa, Sayed, Moudgil, Vadivelu, Dhingra: "Graphene Oxide-Gold Nanosheets Containing Chitosan Scaffold Improves Ventricular Contractility and Function After Implantation into Infarcted Heart." in: **Scientific reports**, Vol. 8, Issue 1, pp. 15069, (2019) ([PubMed](#)).



Western Blotting

Image 1. Western blot of RFP recombinant protein detected with polyclonal anti-RFP antibody. Lane 1 shows no reaction against a GFP recombinant protein present in 10 ug of HeLa cell extract. Lane 2 shows a single band detected in 10 ug of a HeLa lysate containing RFP recombinant protein. polyclonal anti-RFP detects a 27 kDa band corresponding to the epitope tag RFP. A 4-12% Bis-Tris gradient gel (Invitrogen) was used for SDS-PAGE. The protein was transferred to nitrocellulose using standard methods. After blocking the membrane was probed with the primary antibody diluted 1:2,500 for 1 h at room temperature followed by washes and reaction with a 1:5,000 dilution of 800 conjugated Goat-a-Rabbit IgG [H&L] MX .800 fluorescence image was captured using the Infrared Imaging System developed by LI-COR. IRDye is a trademark of LI-COR, Inc. Other detection systems will yield similar results.