

Datasheet for ABIN1302443
anti-CCDC98 antibody (AA 1-313)[Go to Product page](#)

2 Images

Overview

Quantity:	0.1 mg
Target:	CCDC98 (FAM175A)
Binding Specificity:	AA 1-313
Reactivity:	Human
Host:	Mouse
Clonality:	Monoclonal
Conjugate:	This CCDC98 antibody is un-conjugated
Application:	Western Blotting (WB), Immunoprecipitation (IP), Flow Cytometry (FACS)

Product Details

Immunogen:	Recombinant protein corresponding to amino acids 1-313 of ABRA1 with N-terminal His6 tag
Clone:	ABRA1-01
Isotype:	IgG
Specificity:	The mouse monoclonal antibody ABRA1-01 recognizes human ABRA1 (Abraxas, CCDC98), an adaptor protein involved in DNA repair, which migrates as a 45 kDa band on PAAGE under reducing conditions.
Cross-Reactivity (Details):	Human, Other not tested
Purification:	Purified by protein-A affinity chromatography.
Purity:	> 95 % (by SDS-PAGE)

Target Details

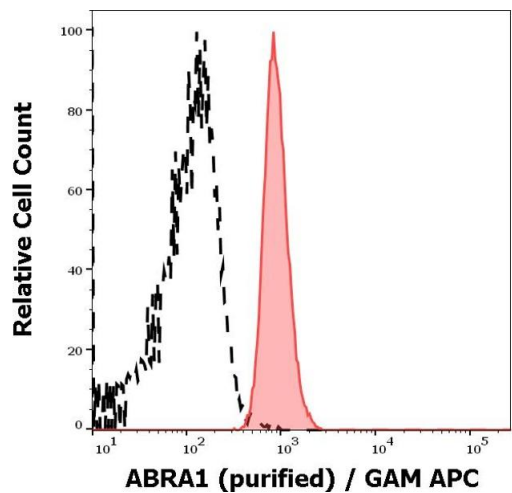
Target:	CCDC98 (FAM175A)
Alternative Name:	ABRA1 (FAM175A Products)
Background:	<p>Abraxas 1, BRCA1 A complex subunit,ABRA1 (Abraxas), also known as CCDC98, is an adaptor protein that is essential for formation and function of BRCA1 A tumor suppressor complex. This complex plays critical roles in DNA repair, cell cycle checkpoint control, and maintenance of genomic stability. ABRA1 mediates interaction of ubiquitin-interacting motif-containing protein RAP80 and deubiquitination enzyme BRCC36 with BRCA1/BARD1. ABRA1 controls both DNA-damage-induced formation of BRCA1 foci and BRCA1-dependent G2/M checkpoint activation.,ABRA1, Abraxas 1, CCDC98, FAM175A</p>
Gene ID:	84142
UniProt:	Q6UWZ7
Pathways:	DNA Damage Repair , Positive Regulation of Response to DNA Damage Stimulus

Application Details

Application Notes:	<p>Flow cytometry: Recommended dilution: 1-2 µg/mL. Intracellular staining.</p> <p>Western blotting: Reducing conditions.</p>
Restrictions:	For Research Use only

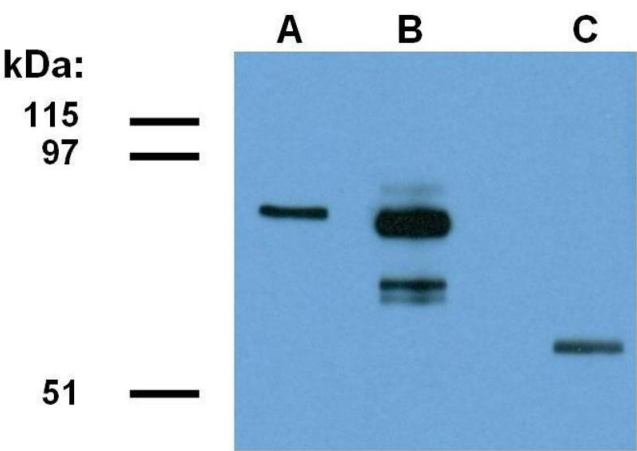
Handling

Concentration:	1 mg/mL
Buffer:	Phosphate buffered saline (PBS), pH 7.4, 15 mM sodium azide
Preservative:	Sodium azide
Precaution of Use:	This product contains Sodium azide: a POISONOUS AND HAZARDOUS SUBSTANCE which should be handled by trained staff only.
Handling Advice:	Do not freeze.
Storage:	4 °C
Storage Comment:	Store at 2-8°C. Do not freeze.



Flow Cytometry

Image 1. Separation of MOLT-4 cells stained using anti-ABRA1 (ABRA1-01) purified antibody (concentration in sample 9 µg/mL, GAM APC, red-filled) from MOLT-4 cells unstained by primary antibody (GAM APC, black-dashed) in flow cytometry analysis (intracellular staining).



Western Blotting

Image 2. Detection of ABRA1-EGFP fusion protein in lysate of transfected HEK293 cells. Lane A: Immunostaining with anti-ABRA1 (clone ABRA1-01) Lane B: Immunostaining with anti-EGFP (polyclonal) Lane C: Immunostaining with anti-alpha tubulin (clone TU-01)