

Datasheet for ABIN1302514
anti-KIR2DL4/CD158d antibody[Go to Product page](#)

4 Images

Overview

Quantity:	0.1 mg
Target:	KIR2DL4/CD158d (KIR2DL4)
Reactivity:	Human
Host:	Mouse
Clonality:	Monoclonal
Conjugate:	This KIR2DL4/CD158d antibody is un-conjugated
Application:	Western Blotting (WB), Flow Cytometry (FACS), Immunoprecipitation (IP), Immunocytochemistry (ICC), Functional Studies (Func)

Product Details

Immunogen:	NK3.3 cells and KIR2DL4-Ig fusion protein
Clone:	MAb 33
Isotype:	IgG1 kappa
Specificity:	The mouse monoclonal antibody mAb#33 (also known as mAb 33 or 33) recognizes extracellular portion of CD158d / KIR2DL4, a 45 kDa NK cell marker. Cell surface expression and function of CD158d / KIR2DL4 depends on genotype of particular individuals.
Purification:	Purified by protein-A affinity chromatography.
Endotoxin Level:	Low Endotoxin

Target Details

Target:	KIR2DL4/CD158d (KIR2DL4)
---------	--------------------------

Target Details

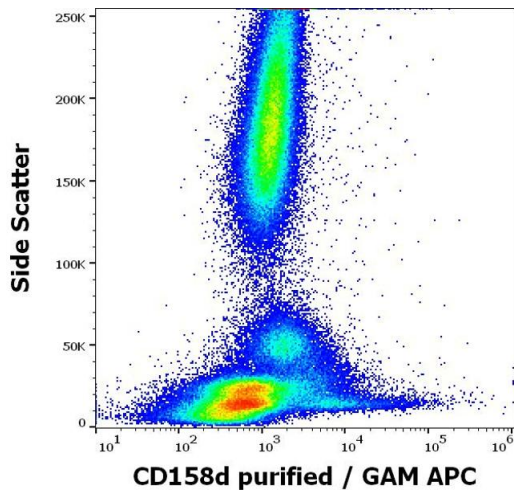
Alternative Name:	KIR2DL4 (KIR2DL4 Products)
Background:	Killer cell immunoglobulin like receptor, two Ig d,CD158d / KIR2DL4 is a KIR family member that shares structural features with both activating and inhibitory receptors and may mediate different functions under different circumstances. It contains cytoplasmic ITIM, suggesting inhibitory function, but also transmembrane domain similar to those of activating KIRs. It has been reported that CD158d serves as an inhibitory receptor for peripheral and uterine NK cells, but its ligation with soluble mAbs (unlike immobilized mAbs) results in activation of IFN- γ , secretion. CD158d also binds both membrane form and soluble form of its ligand HLA-G.,KIR2DL4, KIR103AS, 103AS, 15.212
Gene ID:	3805
UniProt:	Q99706

Application Details

Application Notes:	Flow cytometry: Recommended dilution: 2-6 μ g/mL. Functional application: Activation.
Comment:	CD and Related Antigens (Human)
Restrictions:	For Research Use only

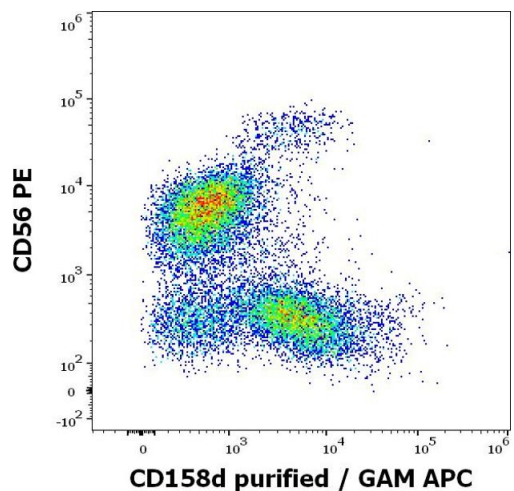
Handling

Concentration:	1 mg/mL
Buffer:	Phosphate buffered saline (PBS), pH 7.4
Storage:	4 °C
Storage Comment:	Store at 2-8°C. Do not freeze.



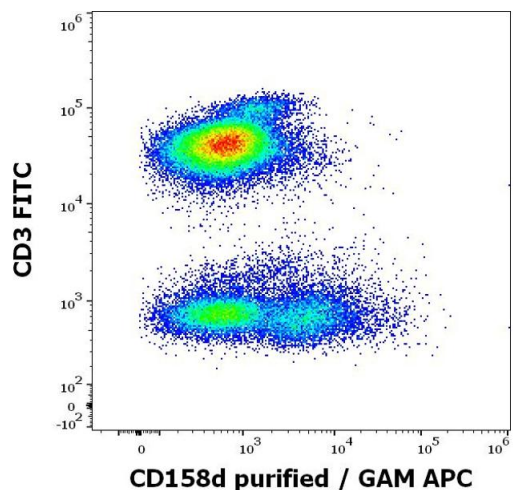
Flow Cytometry

Image 1. Flow cytometry surface staining pattern of murine splenocytes stained using anti-human CD158d (mAb#33) purified antibody (concentration in sample 6 μ g/mL, GAM APC).



Flow Cytometry

Image 2. Flow cytometry multicolor surface staining pattern of human CD3 negative lymphocytes using anti-human CD158d (mAb#33) purified antibody (concentration in sample 6 μ g/mL, GAM APC) and anti-human CD56 (LT56) PE antibody (10 μ L reagent / 100 μ L of peripheral whole blood).



Flow Cytometry

Image 3. Flow cytometry multicolor surface staining pattern of human lymphocytes using anti-human CD158d (mAb#33) purified antibody (concentration in sample 6 μ g/mL, GAM APC) and anti-human CD3 (UCHT1) FITC antibody (20 μ L reagent / 100 μ L of peripheral whole blood).

Please check the [product details page](#) for more images. Overall 4 images are available for ABIN1302514.