

Datasheet for ABIN1302625  
**anti-PDGFRB antibody (APC)**



[Go to Product page](#)

1 Image 1 Publication

## Overview

Quantity:	100 tests
Target:	PDGFRB
Reactivity:	Human
Host:	Mouse
Clonality:	Monoclonal
Conjugate:	This PDGFRB antibody is conjugated to APC
Application:	Flow Cytometry (FACS)

## Product Details

Immunogen:	CD140b-transfected NIH 3T3 cells
Clone:	18A2
Isotype:	IgG1
Specificity:	The monoclonal antibody 18A2 recognizes an extracellular epitope of CD140b / PDGF-RB, the 180-190 kDa beta chain of platelet-derived growth factor receptor, which is widely expressed on a variety of mesenchymal-derived cells and plays pro-proliferative roles.
Cross-Reactivity (Details):	Human
Purification:	Purified antibody is conjugated with activated allophycocyanin (APC) under optimum conditions and unconjugated antibody and free fluorochrome are removed by size-exclusion chromatography.

## Target Details

Target:	PDGFRB
Abstract:	<a href="#">PDGFRB Products</a>
Background:	Platelet derived growth factor receptor beta,CD140b / PDGF-RB (platelet-derived growth factor receptor beta) is a cell surface receptor for members of platelet-derived growth factor family, whose intracellular part contains a tyrosine kinase domain. CD140b forms homodimers, or heterodimerizes with CD140a / PDGF-RA. Whereas CD140a can have both pro-proliferative or anti-proliferative effects, the CD140b induces in various cell types their proliferation and migration. CD140b has also developmental roles in the cardiovascular system and is preferentially expressed on some tumours such as medulloblastoma.,PDGFRB, PDGFR1
Gene ID:	5159
UniProt:	<a href="#">Q59F04</a>
Pathways:	<a href="#">Fc-epsilon Receptor Signaling Pathway</a> , <a href="#">EGFR Signaling Pathway</a> , <a href="#">Neurotrophin Signaling Pathway</a> , <a href="#">Inositol Metabolic Process</a> , <a href="#">Glycosaminoglycan Metabolic Process</a> , <a href="#">Smooth Muscle Cell Migration</a> , <a href="#">Platelet-derived growth Factor Receptor Signaling</a>

## Application Details

Application Notes:	Flow cytometry: The reagent is designed for analysis of human blood cells using 10 µL reagent / 100 µL of whole blood or 10 <sup>6</sup> cells in a suspension. The content of a vial (1 ml) is sufficient for 100 tests.
Comment:	The purified antibody is conjugated with cross-linked Allophycocyanin (APC) under optimum conditions. The conjugate is purified by size-exclusion chromatography and adjusted for direct use. No reconstitution is necessary.
Restrictions:	For Research Use only

## Handling

Reconstitution:	No reconstitution is necessary.
Buffer:	Stabilizing phosphate buffered saline (PBS), pH 7.4, 15 mM sodium azide
Preservative:	Sodium azide
Precaution of Use:	This product contains Sodium azide: a POISONOUS AND HAZARDOUS SUBSTANCE which should be handled by trained staff only.
Handling Advice:	<b>Do not freeze.</b>

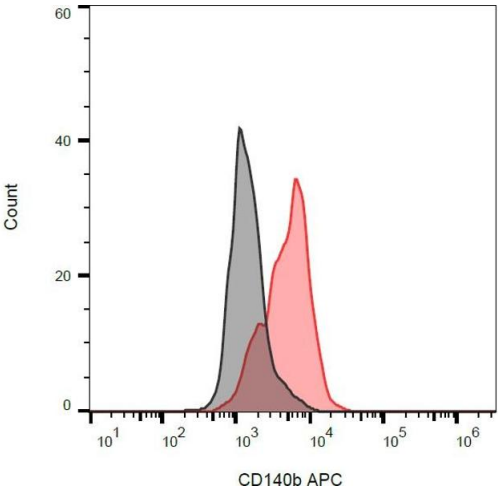
Handling

	Avoid prolonged exposure to light.
Storage:	4 °C
Storage Comment:	Store at 2-8°C. Protect from prolonged exposure to light. Do not freeze.

Publications

Product cited in:	Fekete, Rojewski, Fürst, Kreja, Ignatius, Dausend, Schrezenmeier: "GMP-compliant isolation and large-scale expansion of bone marrow-derived MSC." in: <b>PLoS ONE</b> , Vol. 7, Issue 8, pp. e43255, (2012) ( <a href="#">PubMed</a> ).
-------------------	---

Images



**Flow Cytometry**

**Image 1.** Separation of PDGF-RB transfected cells (red) from 3T3 cells (black) in flow cytometry analysis (surface staining) stained using anti-human CD140b (18A2) APC antibody (concentration in sample 3 µg/mL).