

Datasheet for ABIN1303125
anti-DPP4 antibody (PE)

4 Images

[Go to Product page](#)

Overview

Quantity:	100 tests
Target:	DPP4
Reactivity:	Human
Host:	Mouse
Clonality:	Monoclonal
Conjugate:	This DPP4 antibody is conjugated to PE
Application:	Flow Cytometry (FACS)

Product Details

Immunogen:	A human T cell clone
Clone:	BA5b
Isotype:	IgG2a
Specificity:	The mouse monoclonal antibody BA5b recognizes an extracellular epitope of CD26, a 110 kDa type II transmembrane glycoprotein, which is a peptidase expressed on mature thymocytes, T cells (especially activated), B cells, NK cells and macrophages.
Cross-Reactivity (Details):	Human
Purification:	Purified antibody is conjugated with R-phycoerythrin (PE) under optimum conditions. Unconjugated antibody and free fluorochrome are removed by size-exclusion chromatography.

Target Details

Target:	DPP4
---------	------

Target Details

Alternative Name:	CD26 (DPP4 Products)
Background:	Dipeptidyl peptidase 4,CD26, also known as dipeptidyl peptidase IV (DPP-IV), is a homodimeric cell surface serine peptidase that degrades IFN-gamma-induced cytokines, acts as a T cell costimulatory molecule, and participates in multiple immunopathological roles in leukocyte homing and inflammation. Alterations in its peptidase activity are characteristic of malignant transformation. The enzymatic activity increases dramatically with tumour grade and severity. CD26 is expressed in various blood cell types, but also e.g. in cells that are histogenetically related to activated fibroblasts. Alterations in CD26 density have been reported on circulating monocytes and CD4+ T cells during rheumatoid arthritis and systemic lupus erythematosus.,DPP4, TP103, ADCP-2, ADABP
Gene ID:	1803
UniProt:	P27487
Pathways:	Peptide Hormone Metabolism , Regulation of Leukocyte Mediated Immunity

Application Details

Application Notes:	Flow cytometry: The reagent is designed for analysis of human blood cells using 20 µL reagent / 100 µL of whole blood or 10 ⁶ cells in a suspension. The content of a vial (2 ml) is sufficient for 100 tests.
Comment:	The purified antibody is conjugated with R-Phycoerythrin (PE) under optimum conditions. The conjugate is purified by size-exclusion chromatography and adjusted for direct use. No reconstitution is necessary.
Restrictions:	For Research Use only

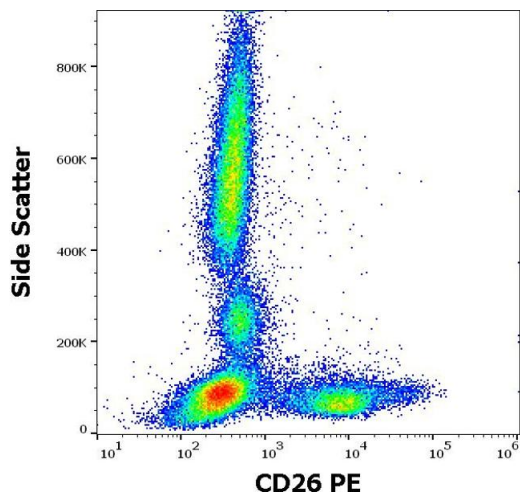
Handling

Reconstitution:	No reconstitution is necessary.
Buffer:	Stabilizing phosphate buffered saline (PBS), pH 7.4, 15 mM sodium azide
Preservative:	Sodium azide
Precaution of Use:	This product contains Sodium azide: a POISONOUS AND HAZARDOUS SUBSTANCE which should be handled by trained staff only.
Handling Advice:	Do not freeze. Avoid prolonged exposure to light.

Storage: 4 °C

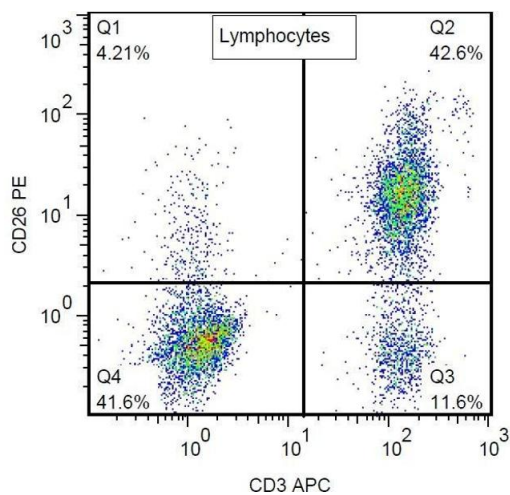
Storage Comment: Store at 2-8°C. Protect from prolonged exposure to light. Do not freeze.

Images



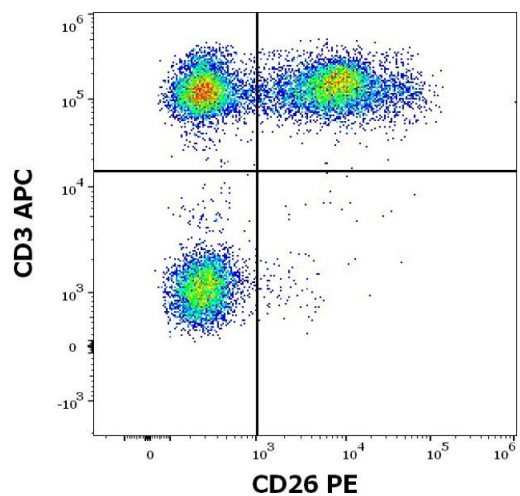
Flow Cytometry

Image 1. Flow cytometry surface staining pattern of human peripheral whole blood stained using anti-human CD26 (BA5b) PE antibody (20 µL reagent / 100 µL of peripheral whole blood).



Flow Cytometry

Image 2. Surface staining of human peripheral blood cells with anti-human CD26 (BA5b) PE.



Flow Cytometry

Image 3. Flow cytometry multicolor surface staining of human lymphocytes stained using anti-human CD26 (BA5b) PE antibody (20 µL reagent / 100 µL of peripheral whole blood) and anti-human CD3 (UCHT1) APC antibody (10 µL reagent per million cells in 100 µL of cell suspension).

Please check the [product details page](#) for more images. Overall 4 images are available for ABIN1303125.