

Datasheet for ABIN1303140
anti-EVI2B antibody (PE)

2 Images

[Go to Product page](#)

Overview

Quantity:	100 tests
Target:	EVI2B
Reactivity:	Human
Host:	Mouse
Clonality:	Monoclonal
Conjugate:	This EVI2B antibody is conjugated to PE
Application:	Flow Cytometry (FACS)

Product Details

Immunogen:	Raji cells
Clone:	MEM-216
Isotype:	IgG1 kappa
Specificity:	The mouse monoclonal antibody MEM-216 recognizes an extracellular epitope of CD361 / EVI2B, almost uncharacterized type I transmembrane protein with broad leukocyte expression, mostly in myeloid and B cells.
Cross-Reactivity (Details):	Human
Purification:	Purified antibody is conjugated with R-phycoerythrin (PE) under optimum conditions. Unconjugated antibody and free fluorochrome are removed by size-exclusion chromatography.

Target Details

Target:	EVI2B
---------	-------

Target Details

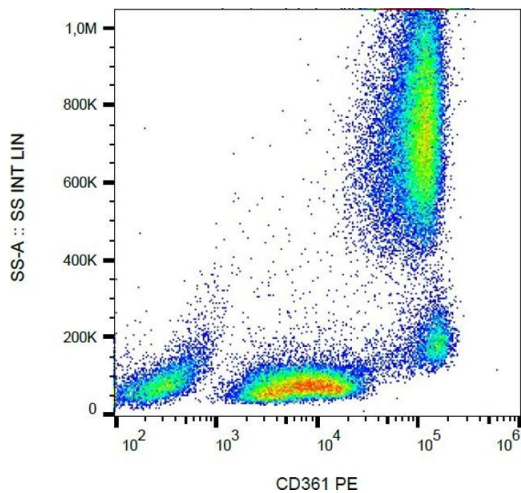
Alternative Name:	CD361 (EVI2B Products)
Background:	Ecotropic viral integration site 2B,CD361, also known as EVI2B (ecotropic viral integration site 2B) or EVDB, is a poorly characterized type I transmembrane protein, expressed from one of three genes embedded in intron 27b of the neurofibromatosis type 1 (NF1) gene. The DNA strand that is transcribed to produce CD361 is the complementary one to the strand encoding NF1. Murine homolog to human CD361 is associated with ecotropic viral insertions, which have been implicated in the expression of murine myeloid leukemias. CD361 has been also reported to be involved in melanocyte and keratinocyte differentiation. However, it is expressed mainly in peripheral blood and bone marrow.,EVI2B, EVDB
Gene ID:	2124
UniProt:	P34910

Application Details

Application Notes:	Flow cytometry: The reagent is designed for analysis of human blood cells using 20 µL reagent / 100 µL of whole blood or 10 ⁶ cells in a suspension. The content of a vial (2 ml) is sufficient for 100 tests.
Comment:	The purified antibody is conjugated with R-Phycoerythrin (PE) under optimum conditions. The conjugate is purified by size-exclusion chromatography and adjusted for direct use. No reconstitution is necessary.
Restrictions:	For Research Use only

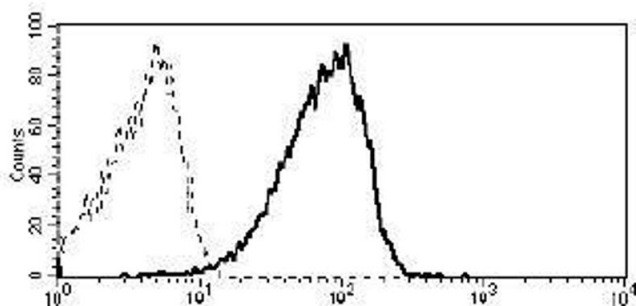
Handling

Reconstitution:	No reconstitution is necessary.
Buffer:	Stabilizing phosphate buffered saline (PBS), pH 7.4, 15 mM sodium azide
Preservative:	Sodium azide
Precaution of Use:	This product contains Sodium azide: a POISONOUS AND HAZARDOUS SUBSTANCE which should be handled by trained staff only.
Handling Advice:	Do not freeze. Avoid prolonged exposure to light.
Storage:	4 °C
Storage Comment:	Store at 2-8°C. Protect from prolonged exposure to light. Do not freeze.



Flow Cytometry

Image 1. Flow cytometry analysis (surface staining) of human peripheral blood using anti-CD361 antibody (MEM-216) PE.



Flow Cytometry

Image 2. Flow cytometry analysis of CD19+ peripheral blood leukocytes using anti-CD361 antibody (MEM-216).