



[Go to Product page](#)

Datasheet for ABIN1303172
anti-BrdU antibody (PE)

1 Image

8 Publications

Overview

Quantity:	100 tests
Target:	BrdU
Reactivity:	Please inquire
Host:	Mouse
Clonality:	Monoclonal
Conjugate:	This BrdU antibody is conjugated to PE
Application:	Flow Cytometry (FACS)

Product Details

Immunogen:	Bromodeoxyuridine conjugated to BSA
Clone:	Bu20a
Isotype:	IgG1
Specificity:	The antibody Bu20a reacts specifically with BrdU incorporated into DNA during S-phase of a cell cycle. It is useful for detecting proliferating cells by flow cytometry or immunohistochemistry staining. It cross-reacts with EdU.
Purification:	Purified antibody is conjugated with R-phycoerythrin (PE) under optimum conditions. Unconjugated antibody and free fluorochrome are removed by size-exclusion chromatography.

Target Details

Target:	BrdU
Alternative Name:	5-bromodeoxyuridine (BrdU) (BrdU Products)

Target Details

Target Type: Chemical

Background: Bromodeoxyuridine (BrdU) is a thymidine analog, which is selectively incorporated into the DNA of proliferating cells to provide a marker for the DNA being replicated. The number of proliferating cells can then be detected in cell lysates, tissue sections or suspensions using an antibody specific for the BrdU.,5-bromodeoxyuridine

Application Details

Application Notes: Flow cytometry: The reagent is designed for analysis of human blood cells using 10 µL reagent / 100 µL of whole blood or 10⁶ cells in a suspension. The content of a vial (1 ml) is sufficient for 100 tests. Intracellular staining.

Comment: The purified antibody is conjugated with R-Phycoerythrin (PE) under optimum conditions. The conjugate is purified by size-exclusion chromatography and adjusted for direct use. No reconstitution is necessary.

Restrictions: For Research Use only

Handling

Buffer: Stabilizing phosphate buffered saline (PBS), pH 7.4, 15 mM sodium azide

Preservative: Sodium azide

Precaution of Use: This product contains Sodium azide: a POISONOUS AND HAZARDOUS SUBSTANCE which should be handled by trained staff only.

Storage: 4 °C

Storage Comment: Store at 2-8°C. Protect from prolonged exposure to light. Do not freeze.

Publications

Product cited in: Yatera, Hsieh, Hogg, Tranfield, Suzuki, Shih, Behzad, Vincent, van Eeden: "Particulate matter air pollution exposure promotes recruitment of monocytes into atherosclerotic plaques." in: **American journal of physiology. Heart and circulatory physiology**, Vol. 294, Issue 2, pp. H944-53, (2008) ([PubMed](#)).

ODriscoll, Jeggo: "CsA can induce DNA double-strand breaks: implications for BMT regimens particularly for individuals with defective DNA repair." in: **Bone marrow transplantation**, Vol. 41, Issue 11, pp. 983-9, (2008) ([PubMed](#)).

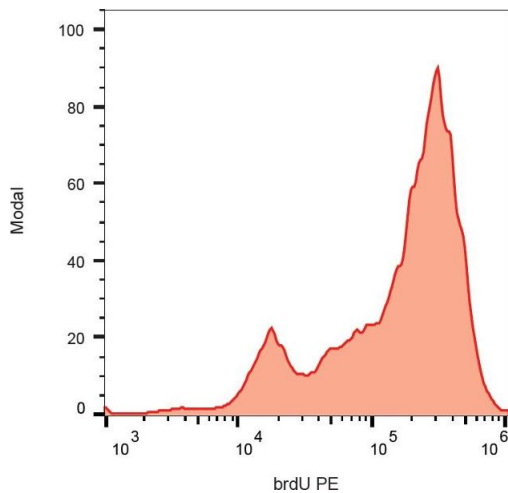
Lagares, Li, Zhou, Avendaño: "Primary sensory neuron addition in the adult rat trigeminal ganglion: evidence for neural crest glio-neuronal precursor maturation." in: **The Journal of neuroscience : the official journal of the Society for Neuroscience**, Vol. 27, Issue 30, pp. 7939-53, (2007) ([PubMed](#)).

Pajalunga, Mazzola, Salzano, Biferi, De Luca, Crescenzi: "Critical requirement for cell cycle inhibitors in sustaining nonproliferative states." in: **The Journal of cell biology**, Vol. 176, Issue 6, pp. 807-18, (2007) ([PubMed](#)).

Martín, Surur, García, Corrons, Badrán: "Comparative study of DNA synthesis and nucleolar organizer regions of sinusoid littoral cells in mouse regenerating liver." in: **Biocell : official journal of the Sociedades Latinoamericanas de Microscopía Electronica ... et. al**, Vol. 29, Issue 1, pp. 33-8, (2005) ([PubMed](#)).

There are more publications referencing this product on: [Product page](#)

Images



Flow Cytometry

Image 1. Flow cytometry analysis (intracellular staining) of BrdU incorporated into the K562 cells. Stained using anti-BrdU (clone Bu20a) PE.