

Datasheet for ABIN1305058

**C3a Protein****1** Image[Go to Product page](#)

## Overview

Quantity:	10 tests
Target:	C3a
Origin:	Mouse
Host:	Please inquire
Protein Type:	Native
Application:	ELISA

## Product Details

Brand:	BD Pharmingen™
--------	----------------

## Target Details

Target:	C3a
Alternative Name:	C3a ( <a href="#">C3a Products</a> )
Background:	<p>The purified Mouse C3a protein is a native protein isolated from activated mouse serum. Anaphylatoxin C3a is a bioactive cleavage product released from plasma component C3 during complement activation and is involved in mediation of a variety of cellular immune responses, as well as being a potent pro-inflammatory agent. The release of this cleavage product is a reliable indicator of in vivo or in vitro complement activation.</p>
Pathways:	<a href="#">Complement System</a>

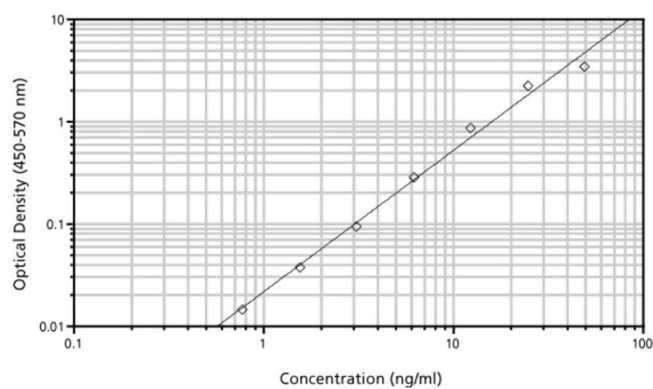
## Application Details

Application Notes:	The Mouse C3a protein is useful as a standard in a sandwich ELISA to measure mouse C3a protein levels. Purified anti-mouse C3a clone I87-1162 as capture antibody can be paired with the biotinylated I87-419 clone as the detection antibody. The purified antibody should be titrated between 1-4 µg/ml to determine the optimal ELISA plate-coating concentration. For plate coating, we recommend to use a pH 6.5 phosphate buffer. To obtain linear standard curves, doubling dilutions of purified mouse C3a protein ranging from 781 pg/ml to 50 ng/ml are recommended for inclusion in each ELISA plate. For specific methodology, see Chapter 7: ELISA for specifically measuring the levels of cytokines, chemokines, and inflammatory mediators and their receptors. 2003. Techniques for Immune Function Analysis Application Handbook 1st Edition. BD Biosciences. This ELISA antibody pair shows no cross-reactivity with the following: recombinant mouse C5a, native human C3a, C4a and C5a, and rat C5a. This ELISA antibody pair shows a limited cross-reactivity with rat C3a.
--------------------	---

Restrictions:	For Research Use only
---------------	-----------------------

## Handling

Format:	Lyophilized
Buffer:	Lyophilized in an aqueous buffered solution containing BSA and ProClin™ 150.
Preservative:	ProClin
Precaution of Use:	This product contains ProClin: a POISONOUS AND HAZARDOUS SUBSTANCE which should be handled by trained staff only.
Handling Advice:	Store the lyophilized vial at 4°C prior to reconstitution. The Mouse C3a protein was isolated from activated mouse serum by affinity chromatography. This product can be reconstituted using 1 ml of Assay Diluent (Cat. No. 555213) or equivalent neutral buffer containing carrier protein, aliquoted into single-use aliquots and stored at -80°C. Avoid multiple freeze-thaws of the reconstituted protein. Each vial contains enough protein for ten 96-well plates. Failure to add carrier protein or store at indicated temperatures may result in a loss of activity. This product should not be diluted prior to long-term storage.
Storage:	4 °C
Storage Comment:	Store the lyophilized standard at 4°C prior to reconstitution.



Enzyme Immunoassay

Image 1.