



[Go to Product page](#)

Datasheet for ABIN1305371

A2ML1 Protein (AA 1-158) (GST tag)

1 Image

Overview

Quantity:	10 µg
Target:	A2ML1
Protein Characteristics:	AA 1-158
Origin:	Human
Source:	Wheat germ
Protein Type:	Recombinant
Purification tag / Conjugate:	This A2ML1 protein is labelled with GST tag.
Application:	Western Blotting (WB), ELISA, Affinity Purification (AP), Antibody Array (AA)

Product Details

Purpose:	A2ML1 (Human) Recombinant Protein (P01)
Sequence:	MYTLEASGQG CVYVQTVLRY NILPPTNMKT FLSLVEIGKA RCEQPTSPRS LTLTIHTSYV GSRSSSNMAI VEVKMLSGFS PMEGTNQLLL QQPLVKKVEF GTDTLNIYLD ELIKNTQTYT FTISQSVLVT NLKPATIKVY DYYLPDEQAT IQYSDPCE
Characteristics:	Human A2ML1 full-length ORF (AAH93840.1, 1 a.a. - 158 a.a.) recombinant protein with GST-tag at N-terminal.
Purification:	in vitro wheat germ expression system

Target Details

Target:	A2ML1
Alternative	A2ML1 (A2ML1 Products)

Target Details

Name:

Background: Full Gene Name: alpha-2-macroglobulin-like 1

Synonyms:

CPAMD9,DKFZp686C1729,DKFZp686D2011,DKFZp686G1812,DKFZp686L1821,DKFZp686O1010,FLJ16045,FLJ25179,FL

Gene ID: 144568

Application Details

Application Notes: Optimal working dilution should be determined by the investigator.

Comment: Preparation method: in vitro, wheat germ expression system
Product Quality tested by: 12.5% SDS-PAGE Stained with Coomassie Blue.

Restrictions: For Research Use only

Handling

Buffer: 50 mM Tris-HCl, 10 mM reduced Glutathione, pH =8.0 in the elution buffer.

Handling Advice: Aliquot to avoid repeated freezing and thawing.

Storage: -80 °C

Storage Comment: Best use within three months from the date of receipt of this protein.

Images

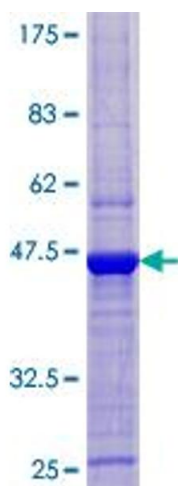


Image 1.