



[Go to Product page](#)

Datasheet for ABIN1305390

AADACL2 Protein (AA 1-379) (GST tag)

1 Image

Overview

Quantity:	25 µg
Target:	AADACL2
Protein Characteristics:	AA 1-379
Origin:	Human
Source:	Wheat germ
Protein Type:	Recombinant
Purification tag / Conjugate:	This AADACL2 protein is labelled with GST tag.
Application:	ELISA, Western Blotting (WB), Affinity Purification (AP), Antibody Array (AA)

Product Details

Purpose:	AADACL2 (Human) Recombinant Protein (P01)
Sequence:	MPDNIEESWK IMALDAIAKT CTFTAMCFEN MRIMRYEEFI SMIFRLDYTQ PLSDEYITVT DTTFVDIPVR LYLPKRKSET RRAVIYFHG GGFCFGSSKQ RAFDFLNRWT ANTLDAVVVG VDYRLAPQHH FPAQFEDGLA AVKFFLLEKI LTKYGVDPTR ICISGDSSGG NLATAVTQQV QNDAEIKHKI KMQVLLYPGL QITDSYLP SH RENEHGIVLT RDVAIKLVSL YFTKDEALPW AMRRNQHMPL ESRHLFKFVN WSILLPEKYR KDYVYTEPIL GGLSYSPLPGL TDSRALPLLA NDSQLQNLPL TYILTCQHDL LRDDGLMYVT RLRNVGVQVV HEHIEDGIHG ALSFMTSPFY LRLGLRIRDM YVSWLDKNL
Characteristics:	Human AADACL2 full-length ORF (NP_997248.1, 1 a.a. - 379 a.a.) recombinant protein with GST-tag at N-terminal.
Purification:	in vitro wheat germ expression system

Target Details

Target:	AADACL2
Alternative Name:	AADACL2 (AADACL2 Products)
Background:	Full Gene Name: arylacetamide deacetylase-like 2 Synonyms: MGC72001
Gene ID:	344752
NCBI Accession:	NM_207365

Application Details

Application Notes:	Optimal working dilution should be determined by the investigator.
Comment:	Preparation method: in vitro, wheat germ expression system Product Quality tested by: 12.5% SDS-PAGE Stained with Coomassie Blue.
Restrictions:	For Research Use only

Handling

Buffer:	50 mM Tris-HCl, 10 mM reduced Glutathione, pH =8.0 in the elution buffer.
Handling Advice:	Aliquot to avoid repeated freezing and thawing.
Storage:	-80 °C
Storage Comment:	Best use within three months from the date of receipt of this protein.

Images

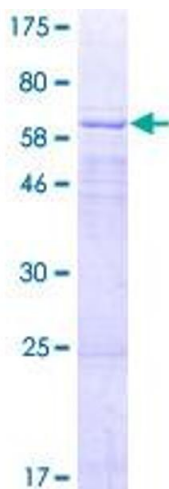


Image 1.