



[Go to Product page](#)

Datasheet for ABIN1305395

AAK1 Protein (AA 1-474) (GST tag)

1 Image

Overview

Quantity:	10 µg
Target:	AAK1
Protein Characteristics:	AA 1-474
Origin:	Human
Source:	Wheat germ
Protein Type:	Recombinant
Purification tag / Conjugate:	This AAK1 protein is labelled with GST tag.
Application:	ELISA, Western Blotting (WB), Affinity Purification (AP), Antibody Array (AA)

Product Details

Purpose:	AAK1 (Human) Recombinant Protein (P01)
Sequence:	MKKFFDSRRE QGGSGLGSGS SGGGGSTSLG GSGYIGRVFG IGRQQVTVDE VLAEGGFAIV FLVRTSNGMK CALKRMFVNN EHDLPQCKRE IQIMRDLSGH KNIVGYIDSS INNVSSGDVW EVLILMDFCR GGQVVNLMNQ RLQTGFTENE VLQIFCDTCE AVARLHQCKT PIIHRDLKVE NILLHDRGHY VLCDFGSATN KFQNPQTEGV NAVEDEIKKY TTLSYRAPEM VNLYSGKIIT TKADIWALGC LLYKLCYFTL PFGESQVAIC DGNFTIPDNS RYSQDMHCLI RYMLEPDPDK RPDIYQVSYF SFKLLKKECP IPNVQNSPIP AKLPEPVKAS EAAAKKTQPK ARLTDPIPTT ETSIAPRQRP KAGQTQPNPG ILPIQPALTP RKRATVQPPP QAAGSSNQPG LLASVPQPKP QAPPSQPLPQ TQAKQPQAPP TPQQTPTSTQA QGLPAQAQAT PQHQHTIKL SMKL
Characteristics:	Human AAK1 full-length ORF (AAH02695.1, 1 a.a. - 474 a.a.) recombinant protein with GST-tag at N-terminal.

Product Details

Purification: in vitro wheat germ expression system

Target Details

Target: AAK1

Alternative AAK1 ([AAK1 Products](#))

Name:

Background: Full Gene Name: AP2 associated kinase 1

Synonyms:

DKFZp686F03202,DKFZp686K16132,FLJ23712,FLJ25931,FLJ31060,FLJ42882,FLJ45252,KIAA1048,MGC138170,MGC16

Gene ID: 22848

Application Details

Application Notes: Optimal working dilution should be determined by the investigator.

Comment: Preparation method: in vitro, wheat germ expression system
Product Quality tested by: 12.5% SDS-PAGE Stained with Coomassie Blue.

Restrictions: For Research Use only

Handling

Buffer: 50 mM Tris-HCl, 10 mM reduced Glutathione, pH =8.0 in the elution buffer.

Handling Advice: Aliquot to avoid repeated freezing and thawing.

Storage: -80 °C

Storage Comment: Best use within three months from the date of receipt of this protein.

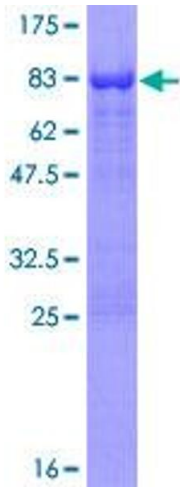


Image 1.