

Datasheet for ABIN1305397

## AAK1 Protein (AA 315-415) (GST tag)



[Go to Product page](#)

### 1 Image

#### Overview

Quantity:	10 µg
Target:	AAK1
Protein Characteristics:	AA 315-415
Origin:	Human
Source:	Wheat germ
Protein Type:	Recombinant
Purification tag / Conjugate:	This AAK1 protein is labelled with GST tag.
Application:	ELISA, Western Blotting (WB), Affinity Purification (AP), Antibody Array (AA)

#### Product Details

Purpose:	AAK1 (Human) Recombinant Protein (Q01)
Sequence:	LKKECPIPNV QNSPIPAKLP EPVKASEAAA KKTQPKARLT DPIPTTETSI APRQRPKAGQ TQPNPGILPI QPALTPRKRA TVQPPPQAAG SSNQPGLLAS V
Characteristics:	Human AAK1 partial ORF ( AAH02695, 315 a.a. - 415 a.a.) recombinant protein with GST-tag at N-terminal.
Purification:	in vitro wheat germ expression system

#### Target Details

Target:	AAK1
Alternative Name:	AAK1 ( <a href="#">AAK1 Products</a> )
Name:	

## Target Details

Background: Full Gene Name: AP2 associated kinase 1

Synonyms:

DKFZp686F03202,DKFZp686K16132,FLJ23712,FLJ25931,FLJ31060,FLJ42882,FLJ45252,KIAA1048,MGC138170,MGC16

Gene ID: 22848

## Application Details

Application Notes: Optimal working dilution should be determined by the investigator.

Comment: Preparation method: in vitro, wheat germ expression system  
Product Quality tested by: 12.5% SDS-PAGE Stained with Coomassie Blue.

Restrictions: For Research Use only

## Handling

Buffer: 50 mM Tris-HCl, 10 mM reduced Glutathione, pH =8.0 in the elution buffer.

Handling Advice: Aliquot to avoid repeated freezing and thawing.

Storage: -80 °C

Storage Comment: Best use within three months from the date of receipt of this protein.

## Images

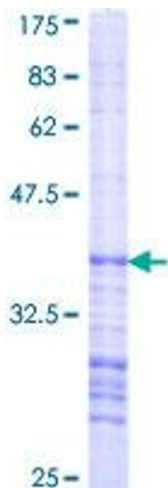


Image 1.