



[Go to Product page](#)

Datasheet for ABIN1305435

ABCB1 Protein (AA 620-709) (GST tag)

1 Image

1 Publication

Overview

Quantity:	10 µg
Target:	ABCB1
Protein Characteristics:	AA 620-709
Origin:	Human
Source:	Wheat germ
Protein Type:	Recombinant
Purification tag / Conjugate:	This ABCB1 protein is labelled with GST tag.
Application:	ELISA, Western Blotting (WB), Affinity Purification (AP), Antibody Array (AA)

Product Details

Purpose:	ABCB1 (Human) Recombinant Protein (Q01)
Sequence:	GIYFKLVTMQ TAGNEVELEN AADESKSEID ALEMSSNSDR SSLIRKRSTR RSVRGSQAQD RKLSTKEALD ESIPPVSFWR IMKLNLTEWP
Characteristics:	Human ABCB1 partial ORF (NP_000918, 620 a.a. - 709 a.a.) recombinant protein with GST-tag at N-terminal.
Purification:	in vitro wheat germ expression system

Target Details

Target:	ABCB1
Alternative Name:	ABCB1 (ABCB1 Products)

Target Details

Background:	Full Gene Name: ATP-binding cassette, sub-family B (MDR/TAP), member 1 Synonyms: ABC20,CD243,CLCS,GP170,MDR1,MGC163296,P-GP,PGY1
Gene ID:	5243
NCBI Accession:	NM_000927

Application Details

Application Notes:	Optimal working dilution should be determined by the investigator.
Comment:	Preparation method: in vitro, wheat germ expression system Product Quality tested by: 12.5% SDS-PAGE Stained with Coomassie Blue.
Restrictions:	For Research Use only

Handling

Buffer:	50 mM Tris-HCl, 10 mM reduced Glutathione, pH =8.0 in the elution buffer.
Handling Advice:	Aliquot to avoid repeated freezing and thawing.
Storage:	-80 °C
Storage Comment:	Best use within three months from the date of receipt of this protein.

Publications

Product cited in:	Kamiie, Ohtsuki, Iwase, Ohmine, Katsukura, Yanai, Sekine, Uchida, Ito, Terasaki: "Quantitative atlas of membrane transporter proteins: development and application of a highly sensitive simultaneous LC/MS/MS method combined with novel in-silico peptide selection criteria." in: Pharmaceutical research , Vol. 25, Issue 6, pp. 1469-83, (2008) (PubMed).
-------------------	---

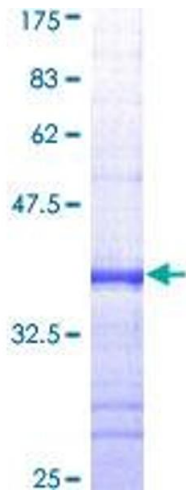


Image 1.