

Datasheet for ABIN1305461

ABCC5 Protein (AA 760-846) (GST tag)[Go to Product page](#)**1** Image

Overview

Quantity:	10 µg
Target:	ABCC5
Protein Characteristics:	AA 760-846
Origin:	Human
Source:	Wheat germ
Protein Type:	Recombinant
Purification tag / Conjugate:	This ABCC5 protein is labelled with GST tag.
Application:	Western Blotting (WB), ELISA, Affinity Purification (AP), Antibody Array (AA)

Product Details

Purpose:	ABCC5 (Human) Recombinant Protein (Q01)
Sequence:	CITERGTHEE LMNLNGDYAT IFNLLLLGET PPVEINSKKE TSGSQKKSQD KGPKTGSVKK EKAVKPEEGQ LVQLEEKGGQ SVPWSVY
Characteristics:	Human ABCC5 partial ORF (NP_005679.2, 760 a.a. - 846 a.a.) recombinant protein with GST-tag at N-terminal.
Purification:	in vitro wheat germ expression system

Target Details

Target:	ABCC5
Alternative Name:	ABCC5 (ABCC5 Products)

Target Details

Background:	Full Gene Name: ATP-binding cassette, sub-family C (CFTR/MRP), member 5 Synonyms: ABC33,DKFZp686C1782,EST277145,MOAT-C,MOATC,MRP5,SMRP,pABC11
Gene ID:	10057
NCBI Accession:	NM_005688
Pathways:	Glycosaminoglycan Metabolic Process

Application Details

Application Notes:	Optimal working dilution should be determined by the investigator.
Comment:	Preparation method: in vitro, wheat germ expression system Product Quality tested by: 12.5% SDS-PAGE Stained with Coomassie Blue.
Restrictions:	For Research Use only

Handling

Buffer:	50 mM Tris-HCl, 10 mM reduced Glutathione, pH =8.0 in the elution buffer.
Handling Advice:	Aliquot to avoid repeated freezing and thawing.
Storage:	-80 °C
Storage Comment:	Best use within three months from the date of receipt of this protein.

Images

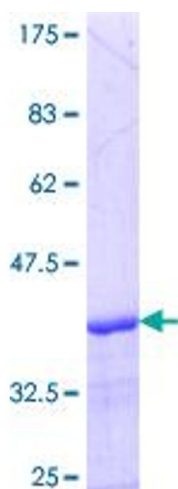


Image 1.