



[Go to Product page](#)

Datasheet for ABIN1305465

## ABCC6 Protein (AA 831-930) (GST tag)

### 1 Image

#### Overview

|                               |   |
|-------------------------------|---|
| Quantity:                     | 10 µg   |
| Target:                       | ABCC6   |
| Protein Characteristics:      | AA 831-930  |
| Origin:                       | Human   |
| Source:                       | Wheat germ  |
| Protein Type:                 | Recombinant   |
| Purification tag / Conjugate: | This ABCC6 protein is labelled with GST tag.                                  |
| Application:                  | Western Blotting (WB), ELISA, Affinity Purification (AP), Antibody Array (AA) |

#### Product Details

|                  |  |
|------------------|--|
| Purpose:         | ABCC6 (Human) Recombinant Protein (Q01)  |
| Sequence:        | IAEMGSYQEL LQRKGALVCL LDQARQPGDR GEGETEPGTS TKDPRGTSAG RRPELRRERS<br>IKSVPEKDRT TSEAQTEVPL DDPDRAGWPA GKDSIQYGRV |
| Characteristics: | Human ABCC6 partial ORF ( NP_001162, 831 a.a. - 930 a.a.) recombinant protein with GST-tag at N-terminal.        |
| Purification:    | in vitro wheat germ expression system  |

#### Target Details

|                   |  |
|-------------------|--|
| Target:           | ABCC6                                    |
| Alternative Name: | ABCC6 ( <a href="#">ABCC6 Products</a> ) |

## Target Details

|                 |   |
|-----------------|---|
| Background:     | Full Gene Name: ATP-binding cassette, sub-family C (CFTR/MRP), member 6<br>Synonyms: ABC34,ARA,EST349056,MLP1,MOATE,MRP6,PXE,PXE1 |
| Gene ID:        | 368   |
| NCBI Accession: | <a href="#">NM_001171</a>   |

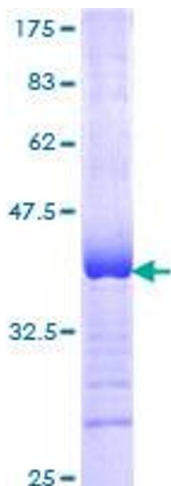
## Application Details

|                    |  |
|--------------------|--|
| Application Notes: | Optimal working dilution should be determined by the investigator.   |
| Comment:           | Preparation method: in vitro, wheat germ expression system<br>Product Quality tested by: 12.5% SDS-PAGE Stained with Coomassie Blue. |
| Restrictions:      | For Research Use only  |

## Handling

|                  |   |
|------------------|---|
| Buffer:          | 50 mM Tris-HCl, 10 mM reduced Glutathione, pH =8.0 in the elution buffer. |
| Handling Advice: | Aliquot to avoid repeated freezing and thawing.                           |
| Storage:         | -80 °C  |
| Storage Comment: | Best use within three months from the date of receipt of this protein.    |

## Images



**Image 1.**