

Datasheet for ABIN1305467

ABCC8 Protein (AA 611-710) (GST tag)



[Go to Product page](#)

1 Image

Overview

Quantity:	10 µg
Target:	ABCC8
Protein Characteristics:	AA 611-710
Origin:	Human
Source:	Wheat germ
Protein Type:	Recombinant
Purification tag / Conjugate:	This ABCC8 protein is labelled with GST tag.
Application:	Western Blotting (WB), ELISA, Affinity Purification (AP), Antibody Array (AA)

Product Details

Purpose:	ABCC8 (Human) Recombinant Protein (Q01)
Sequence:	SEFLSSAEIR EEQCAPHEPT PQGPASKYQA VPLRVVNRKR PAREDCRGLT GPLQSLVPSA DGDADNCCVQ IMGGYFTWTP DGIPTLSNIT IRIPRGQLTM
Characteristics:	Human ABCC8 partial ORF (NP_000343, 611 a.a. - 710 a.a.) recombinant protein with GST-tag at N-terminal.
Purification:	in vitro wheat germ expression system

Target Details

Target:	ABCC8
Alternative Name:	ABCC8 (ABCC8 Products)

Target Details

Background:	Full Gene Name: ATP-binding cassette, sub-family C (CFTR/MRP), member 8 Synonyms: ABC36,HHF1,HI,HRINS,MRP8,PHHI,SUR,SUR1,TNDM2
Gene ID:	6833
NCBI Accession:	NM_000352
Pathways:	Negative Regulation of Hormone Secretion

Application Details

Application Notes:	Optimal working dilution should be determined by the investigator.
Comment:	Preparation method: in vitro, wheat germ expression system Product Quality tested by: 12.5% SDS-PAGE Stained with Coomassie Blue.
Restrictions:	For Research Use only

Handling

Buffer:	50 mM Tris-HCl, 10 mM reduced Glutathione, pH =8.0 in the elution buffer.
Handling Advice:	Aliquot to avoid repeated freezing and thawing.
Storage:	-80 °C
Storage Comment:	Best use within three months from the date of receipt of this protein.

Images

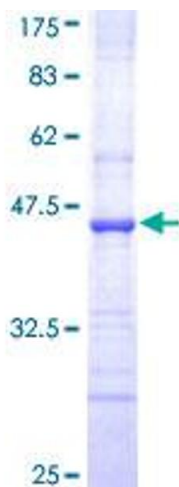


Image 1.