



[Go to Product page](#)

Datasheet for ABIN1305469

## ABCD1 Protein (AA 1-745) (GST tag)

### 1 Image

#### Overview

Quantity:	10 µg
Target:	ABCD1
Protein Characteristics:	AA 1-745
Origin:	Human
Source:	Wheat germ
Protein Type:	Recombinant
Purification tag / Conjugate:	This ABCD1 protein is labelled with GST tag.
Application:	ELISA, Western Blotting (WB), Affinity Purification (AP), Antibody Array (AA)

#### Product Details

Purpose:	ABCD1 (Human) Recombinant Protein (P01)
Sequence:	<p>MPVLSRPRPW RGNTLKRTAV LLALAAYGAH KVYPLVRQCL APARGLQAPA GEPTQEASGV</p> <p>AAAKAGMNRV FLQRLWLLR LLFPRVLCRE TGLLALHSAA LVSRTFLSVY VARLDGRLAR</p> <p>CIVRKDPRAF GWQLLQWLLI ALPATFVNSA IRYLEGQLAL SFRSRLVAHA YRLYFSQQTY</p> <p>YRVSNMDGRL RNPDQSLTED VVAFAASVAH LYSNLTKPLL DVAVTSYTLT RAARSRGAGT</p> <p>AWPSAIAGLV VFLTANVLR FSPKFGELVA EEARRKGELR YMHSRVVANS EEIAFYGGHE</p> <p>VELALLQRSY QDLASQINLI LLERLWYVML EQFLMKYVWS ASGLLMVAVP IITATGYSES</p> <p>DAEAVKKAAL EKKEEELVSE RTEAFTIARN LLTAAADAIE RIMSSYKEVT ELAGYTARVH</p> <p>EMFQVFEDVQ RCHFVKRPREL EDAQAGSGTI GRSGVRVEGP LKIRGQVVDV EQGIICENIP</p> <p>IVTPSGEVVV ASLNIRVEEG MHLITGPNP CGKSSLFRIL GGLWPTYGGV LYKPPPQRMF</p> <p>YIPQRPYMSV GSLRDQVIYP DSVEDMQRKG YSEQDLEAIL DVVHLHHILQ REGGWEAMCD</p> <p>WKDVLSSGGEK QRIGMARMFY HRPKYALLDE CTSAVSIDVE GKIFQAAKDA GIALLSITHR</p>

## Product Details

---

PSLWKYHHTL LQFDGEGGWK FEKLDSAARL SLTEEKQRLE QQLAGIPKMQ RRLQELCQIL  
GEAVAPAHVP APSPQGPGL QGAST

Characteristics: Human ABCD1 full-length ORF ( NP\_000024.2, 1 a.a. - 745 a.a.) recombinant protein with GST-tag at N-terminal.

Purification: in vitro wheat germ expression system

## Target Details

---

Target: ABCD1

Alternative Name: ABCD1 ([ABCD1 Products](#))

Background: Full Gene Name: ATP-binding cassette, sub-family D (ALD), member 1  
Synonyms: ABC42,ALD,ALDP,AMN

Gene ID: 215

NCBI Accession: [NM\\_000033](#)

Pathways: [Monocarboxylic Acid Catabolic Process](#)

## Application Details

---

Application Notes: Optimal working dilution should be determined by the investigator.

Comment: Preparation method: in vitro, wheat germ expression system  
Product Quality tested by: 12.5% SDS-PAGE Stained with Coomassie Blue.

Restrictions: For Research Use only

## Handling

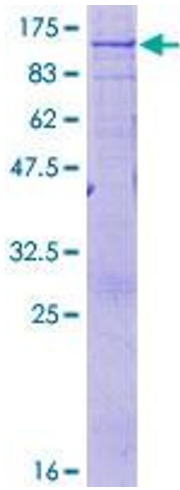
---

Buffer: 50 mM Tris-HCl, 10 mM reduced Glutathione, pH =8.0 in the elution buffer.

Handling Advice: Aliquot to avoid repeated freezing and thawing.

Storage: -80 °C

Storage Comment: Best use within three months from the date of receipt of this protein.



**Image 1.**